






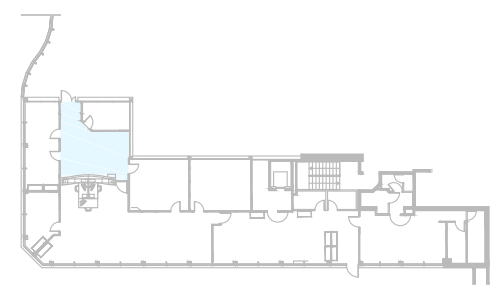


-  ZONE ERP
-  CHEMINEMENT POUR L'ACCESSIBILITE AUX PERSONNES HANDICAPEES
-  DEFICIENTS MOTEURS
-  DEFICIENTS VISUELS
-  DEFICIENTS MENTAUX
-  DEFICIENTS AUDITIFS
-  PERSONNE A MOTRICITE REDUITE
-  PERSONNE ACCOMPAGNEE D'ENFANTS
-  PARKING ACCESSIBLE AUX PERSONNES HANDICAPEES
-  RAMPE ACCESSIBLE AUX PERSONNES HANDICAPEES
-  ASCENSEUR ACCESSIBLE AUX PERSONNES HANDICAPEES



Succursale de CERGY  
6, Boulevard de l'Oise  
95000 CERGY PONTOISE

### PLAN D'ACCESSIBILITE

DIRECTION DE L'IMMOBILIER  
ET DES SERVICES GENERAUX  
PGE - POLE GRAPHIQUE IMMOBILIER  
DATE: 13/10/2017 ECH: -  
DESSINE PAR: - PLAN N°: -  
INDICE: -

