






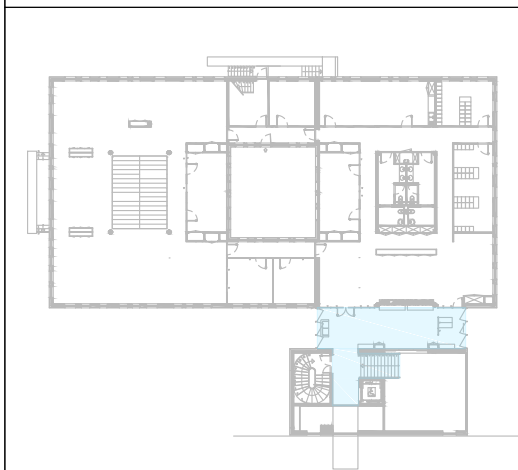


-  ZONE ERP
-  CHEMINEMENT POUR L'ACCESSIBILITE AUX PERSONNES HANDICAPEES
-  DEFICIENTS MOTEURS
-  DEFICIENTS VISUELS
-  DEFICIENTS MENTAUX
-  DEFICIENTS AUDITIFS
-  PERSONNE A MOTRICITE REDUITE
-  PERSONNE ACCOMPAGNEE D'ENFANTS
-  PARKING ACCESSIBLE AUX PERSONNES HANDICAPEES
-  RAMPE ACCESSIBLE AUX PERSONNES HANDICAPEES
-  ASCENSEUR ACCESSIBLE AUX PERSONNES HANDICAPEES



Succursale d'AVIGNON
 Site Agroparc
 25 rue Baruch de Spinoza
 84908 Avignon Cedex 9

PLAN D'ACCESSIBILITE 1ER ETAGE

DIRECTION DE L'IMMOBILIER
 ET DES SERVICES GENERAUX
 PGI - POLE GRAPHIQUE IMMOBILIER
 DATE: 13/10/2017 ECH:
 DESSINE PAR: - PLAN N°: -
 INDICE: -

