

---

DOCUMENT  
DE TRAVAIL  
N° 337

---

**SHORT NOTE ON THE UNEMPLOYMENT RATE  
OF THE “FRENCH OVERSEAS REGIONS”**

Jean François Hoarau, Claude Lopez et Michel Paul

July 2011



**SHORT NOTE ON THE UNEMPLOYMENT RATE  
OF THE “FRENCH OVERSEAS REGIONS”**

Jean François Hoarau, Claude Lopez et Michel Paul

July 2011

Les Documents de travail reflètent les idées personnelles de leurs auteurs et n'expriment pas nécessairement la position de la Banque de France. Ce document est disponible sur le site internet de la Banque de France « [www.banque-france.fr](http://www.banque-france.fr) ».

Working Papers reflect the opinions of the authors and do not necessarily express the views of the Banque de France. This document is available on the Banque de France Website “[www.banque-france.fr](http://www.banque-france.fr)”.

## Short Note on the Unemployment Rate of the “French overseas regions”

Jean François Hoarau<sup>1</sup>  
*CEMOI, University of La Reunion*

Claude Lopez<sup>2</sup>  
*Banque de France*

Michel Paul<sup>3</sup>  
*CEMOI, University of La Reunion*

---

<sup>1</sup> Faculté de Droit et d'Economie, 15 avenue René Cassin, 97715 Saint-Denis Messag Cedex 9, Tel. : +33 2 62 93 84 52,  
Email : [jfhoarau@univ-reunion.fr](mailto:jfhoarau@univ-reunion.fr)

<sup>2</sup> \* International Macroeconomics Division, Banque de France, 31 rue croix des petits champs, 75049 Paris cedex 01, France,  
Tel : +33 1 42 92 49 53 Email: [Claude.Lopez@banque-france.fr](mailto:Claude.Lopez@banque-france.fr)

<sup>3</sup> Faculté de Droit et d'Economie, 15 avenue René Cassin, 97715 Saint-Denis Messag Cedex 9,.

### *Abstract*

This article analyzes the hysteresis hypothesis in the unemployment rates of the four French overseas regions (Guadeloupe, Martinique, Guyana, Reunion) [FORs] over the period 1993-2008. We use standard univariate and panel unit root tests, among them Choi (2006) and Lopez (2009) that account for cross-sectional dependence and have improved performance when the number of countries and the time dimension of the data are limited. Our results cannot reject the null hypothesis of a unit root and so find evidence supporting hysteresis in the unemployment rates for the FORs.

*Keywords:* panel unit root, unemployment, hysteresis

*JEL classification:* C32, F31

---

### *Résumé*

Cet article analyse l'hypothèse d'hystérésis dans le taux de chômage pour les quatre régions françaises d'Outre-Mer (la Guadeloupe, la Martinique, la Guyane, et la Réunion) durant la période s'étendant de 1993 à 2008. Les résultats, basés sur des tests de racine unitaire en panel de seconde génération (Choi (2006) and Lopez (2009)), confirment la présence d'hystérésis dans le taux de chômage de ces régions.

*Mots-clés:* racine unitaire, panel, taux de chômage, hystérésis

*Code JEL:* C32, F31

## 1. Introduction

Determining whether unemployment rate can be characterized by a stationary process remains a major challenge for economists and policy makers. This problem is especially crucial for the French overseas regions [FORs] (Guadeloupe, Martinique, Guyana, and Reunion), which, according to the European Union [EU]'s statistics agency "Eurostat", had the highest unemployment rates in the 27-nation EU in 2007. This finding clearly emphasizes the great failure of different policies against unemployment implemented by the successive French governments of the last decades.

The determination of suitable policies for these non-continental regions relies on understanding the behavior of unemployment rates from a theoretical standing point. Camarero *et al.* (2006) mentions two commonly used descriptions. On one hand, the non-accelerating inflation rate of unemployment [NAIRU] hypothesis characterizes the unemployment rate as a stationary process, *i.e.* the unemployment rate tends to revert to its equilibrium in the long-run after a shock.<sup>4</sup> On the other hand, the hysteresis hypothesis states that the unemployment rate is an integrated process of order one, *i.e.* shocks have a permanent effect on unemployment.<sup>5</sup> The empirical validity of these hypotheses commonly relies on testing for the presence of a unit root. Clearly, the hysteresis hypothesis is associated with the presence of a unit root in the unemployment rate process while the NAIRU or natural-rate hypothesis is associated with its rejection.

Since the pioneer work of Blanchard and Summers (1986), many authors have used unit root tests to study the unemployment rate. Most of them, such as Mitchell (1993), Roed (1996), Song and Wu (1997) and (1998), Arestis and Mariscal (1999) Murray and Papell (2000), Leon-Ledesma (2002), Camarero *et al.* (2006), and Yilanci (2008) focus on developed countries. Yet, this vast literature does not reach any consensus on the debate NAIRU versus hysteresis for developed countries.<sup>6</sup> Furthermore, only few studies, among them Chang *et al.* (2007), Gomes and Gomes da Silva (2008) and Gomes and Gomes da Silva (2009) analyze developing countries.

This article contributes to this latter line of research by investigating whether hysteresis in unemployment characterizes the FORs' labor market. More precisely, we test for the presence of a unit root in the unemployment rate of Guadeloupe, Martinique, Guyana, and Reunion for the 1993-2008 period. First, our analysis relies on univariate and standard panel unit root tests. Then, the limited amount of data available being a concern, we use the more powerful tests of Choi (2006) and Lopez (2009). To our knowledge, this is the first time that the hysteresis paradigm is tested for a set of Small Island Developing Economies [SIDE].

The remainder of this article is organized as follows. Section 2 describes the panel unit root tests proposed by Choi (2006) and Lopez (2009) while Section 3 presents the data and the empirical results. Finally, Section 4 gives some concluding remarks and the policy implications of our findings.

## 2. Econometric methodology

---

<sup>4</sup> A special case of the NAIRU concept is when the unemployment rate can be defined as a stationary process around a small number of permanent structural breaks (Phelps, 1994). Most shocks to unemployment are still temporary but with occasional and permanent changes in the natural rate.

<sup>5</sup> See Roed (1997) for the theoretical aspects on the hysteresis concept.

<sup>6</sup> See Camarero *et al.* (2006) and Chang *et al.* (2007) for a recent survey of this literature.

Standard univariate unit root tests, such as the augmented Dickey Fuller [ADF] or Elliott, Rothenberg, and Stock [ERS] tests, are well-known for their inability to accurately reject the unit root null hypothesis when the span of the data is short. Hence, they often lead to evidence of non stationary data when the data may be stationary. One way of dealing with this issue is to extend the cross-sectional dimension that is adding countries, moving from a univariate to a multivariate analysis. Combining the number of periods with the number of countries leads to significant improvements in the tests' ability to correctly reject the unit root null hypothesis. However, the first generation panel unit root tests, such as Levin *et al.* (2002) [LLC], Im *et al.* (2003) [IPS] and Maddala and Wu (1999) [MW], assume that there is no contemporaneous relation between the countries studied. If the data do not observe such a restrictive assumption, then these tests have the tendency of over rejecting the null hypothesis, leading to evidence of stationarity when the data may be non stationary.

The second generation panel unit root tests suggest several alternatives to relax this assumption.<sup>7</sup> We focus on two of these newer tests: Choi (2006) and Lopez (2009) which both propose a panel version of the ERS(1996) univariate unit root tests, but differ in the treatment of the contemporaneous correlation as well as in the hypotheses tested. Choi (2006) uses a unique common factor structure approach and cross-sectionally demeans the data, while Lopez (2009) advocates the estimation of the residual covariance matrix. Furthermore, Choi (2006)'s alternative hypothesis allows for some stationary processes while Lopez (2009) considers that all the series are stationary. Yet, as Breitung and Pesaran (2008) pointed out, in both cases the rejection of the null hypothesis means that "a significant fraction of the cross-section units are stationary".

Both estimation procedures rely on the GLS-transformation of the data such that:

- Step 1: For each series  $y_{jt}$  with deterministic component  $z_{jt}$ , the quasi-differences  $\tilde{y}_{jt} = (\tilde{y}_{j1}, (\tilde{y}_{j2} - a\tilde{y}_{j1}), \dots, (\tilde{y}_{jT} - a\tilde{y}_{jT-1}))'$  and  $\tilde{z}_{jt} = (1, (1 - a, \dots, 1 - a)')$  are calculated using the local alternative  $a = 1 + \frac{-7}{\sqrt{NT}}$  for Choi (2006) and  $a = 1 + \frac{-7}{\sqrt{NT}}$  for Lopez (2009). The locally demeaned data are then constructed as  $y_{jt}^d = y_{jt} - \beta_j' z_{jt}$ , where  $\beta_j$  is the least-squares estimate of the regression of  $\tilde{z}_{jt}$  on  $\tilde{y}_{jt}$ .

Then Choi (2006) combines the p-values of the univariate unit root tests while Lopez (2009) uses the pooled data.

Choi (2006)'s testing procedure follows:

- Step 2: The data is cross-sectionally demeaned:

$$z_{jt} = y_{jt}^d - \frac{1}{N} \sum_{j=1}^N y_{jt}^d$$

- Step 3 : Estimation of the DF-GLS<sup>u</sup> regressions for the series  $j=1, \dots, N$ ,

$$\Delta z_{jt} = \rho_j z_{jt} + \sum_{i=1}^{k_j} \phi_{ji} \Delta z_{j,t-i} + u_{jt} \text{ with } t = 1, \dots, T$$

---

<sup>7</sup> Breitung and Pesaran (2008) provide a survey of the literature.

Where  $k_j$ , the number of lagged first difference terms allowing for serial correlation, is selected using the Modified Akaike Information Criterion [MAIC].

The t-statistic is calculated for  $H_0: \rho_j = 0$  and the corresponding p-values are generated. Finally, the following statistics are calculated:

$$Pm = -\frac{1}{\sqrt{N}} \sum_{j=1}^N (\ln(p_j) + 1)$$

$$Z = \frac{1}{\sqrt{N}} \sum_{j=1}^N \Phi^{-1}(p_j)$$

$$L^* = \frac{1}{\sqrt{\pi^2 N/3}} \sum_{j=1}^N \ln\left(\frac{p_j}{1-p_j}\right)$$

The unit root null hypothesis is rejected if  $P_m > c_{p\alpha}$ ,  $Z < c_{z\alpha}$  and  $L^* < c_{l\alpha}$ , where  $c_{p\alpha}$  is from the upper tail of the standard normal distribution while  $c_{z\alpha}$ , and  $c_{l\alpha}$  from the lower tail.

Lopez (2009)'s testing procedure follows:

Step 2: For each series,  $k_j$  is selected using the MAIC

Step 3: Estimation of the following system equations:

$$\Delta y_{jt}^d = \rho y_{jt}^d + \sum_{i=1}^{k_j} \phi_{ji} \Delta y_{j,t-i}^d + u_{jt} \quad \text{with } j = 1, \dots, N \text{ and } t = 1, \dots, T \quad (1)$$

Clearly, the residual covariance matrix is estimated. Then, it is used in the estimation of (1) with the SUR/FGLS method while constraining the values of  $\rho$  to be equal across equations. The estimated  $\rho$  and its corresponding standard deviation are obtained and the t-statistic is calculated for  $H_0: \rho = 0$ . Finally, since the statistic depends on the estimated residual covariance matrix, the critical values are bootstrapped with 10000 iterations, to avoid size distortion.<sup>8,9</sup>

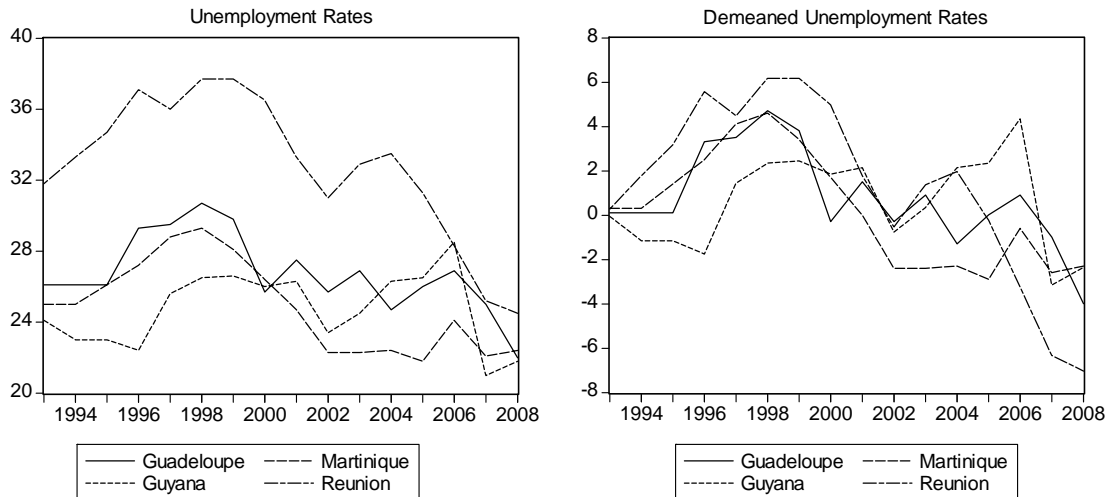
### 3. Data and empirical results

We use the definition of the International Labor Organization for the annual rates of unemployment, and consider for 4 specific French regions (Guadeloupe, Martinique, Guyana, and Reunion) for the period from 1993 to 2008. The data are from the “demographic indicators and economic account” database of the French National Institute of Statistical and Economic Information. For each country, the data and its GLS-demeaned version are presented in Figure 1.

<sup>8</sup> See Lopez (2009) for more details.

<sup>9</sup> The SUR estimation requires that  $T > N$ .

**Figure 1. Unemployment Rates**



We first analyze the data via commonly used univariate unit root tests, namely the ADF test, the DF-GLS test of ERS and the M-GLS tests ( $MZ_t$  and  $MZ_a$ ) of Ng and Perron (2001). The results are reported in Table 1, with  $k$ , the appropriate number of lags selected using MAIC. The use of asymptotic critical values leads to the rejection of the unit root hypothesis for Guyana when using DF-GLS,  $MZ_a$  and  $MZ_t$ . Yet, these results disappear when the critical values are simulated to account for the very small span of our data sets (16 years). This discrepancy is expected as using asymptotic critical values when dealing with a small sample may lead to significant size distortions. The overall lack of rejections is still not very informative as the univariate unit root tests are also well-known for their lack of power when applied to very short data.

**Table 1. Univariate unit root tests for the FORs, 1993-2008**

Regions	ADF	DF-GLS	$MZ_a$	$MZ_t$	$k$
Guadeloupe	-1.1695	-1.279	-4.1862	-1.1453	0
Guyana	-2.3614	-2.528**(a)	-6.5618*(a)	-1.7043*(a)	0
Martinique	-0.7717	-0.880	-1.7077	-0.8238	0
Reunion	0.3128	-0.016	-0.0295	-0.0140	0

Notes: \* and \*\* indicate significance at the 10% and the 5% levels, respectively. The 5% (10%) critical values for the ADF, DF-GLS,  $MZ_a$  and  $MZ_t$  tests are -3.08 (-2.68), -1.96 (-1.61), -8.10 (-5.10) and -1.98 (-1.62), respectively.

(a): These rejections disappears with bootstrapped critical values.

The panel unit root tests are a logical next step as these four French regions present several similarities. Some of these common characteristics are (i) a geographical isolation due to the distance from the European continent, reinforced by insularity or enclave status; (ii) a limited local market, linked to the size of the population; (iii) geographical and climatic conditions limiting the endogenous development of primary and secondary industries (lack of natural resources, active volcanic areas, ...); and (iv) an economic dependence on a small number of products. As a result, these regions have important structural and permanent handicaps when compared to the rest of France or the EU. The EU has recognized this specific situation by grouping them into the “Ultra Peripheral Regions” [UPR] area.<sup>10,11</sup>

<sup>10</sup> The concept of UPR was officially recognized in 1997 by the Treaty of Amsterdam (Article 299§2).

<sup>11</sup> The UPR group also includes the Azores, the Canaries and Madeira.



The top panel of Table 2 presents the results of several first-generation panel unit root tests, namely the Levin *et al.* (2002) [LLC], Im *et al.* (2003) [IPS] and Maddala and Wu (1999) [MW] tests. The MAIC procedure is used to determine the optimal number of lags. None of the tests are able to reject the unit root null, providing evidence of hysteresis in unemployment rates. Interestingly, while these first generation tests are well-known for their tendency of over-rejecting the null hypothesis, this does not seem to be an issue here.

**Table 2. Panel data unit root tests for the FORs, 1993-2008**

	Statistics	p-value
<b>First-generation tests</b>		
LLC	1.7081	0.9562
IPS	1.0752	0.8589
MW	4.9217	0.7659
<b>Second-generation tests</b>		
$P_m$	0.0201	0.4919
Z	0.1483	0.5590
$L^*$	0.1521	0.5608
DF-GLS-SUR (bootstrapped)	-2.1998	0.2120

However, these tests may have very low power due to the small size of the panel (16 years for 4 countries). Choi (2006) and Lopez (2009) rely the GLS-transformation and provide a more powerful alternative to IPS and LLC, respectively. Furthermore, they account for contemporaneous correlation, minimizing the risk of size distortion. The results are reported in the lower panel of Table 2.

We are still not able to reject of the non-stationarity null, providing evidence of hysteresis in the unemployment rates for the FORs during the period 1993-2008.<sup>12</sup> As a result, the unemployment rate will not revert to its long-run equilibrium level given by the NAIRU for this period.

#### 4. Conclusion and policy implications

This article studies the behavior of the unemployment rates of four French regions, namely Guadeloupe, Martinique, Guyana and Reunion over the period 1993-2008. We analyze the behavior of these series using univariate and multivariate unit root tests, especially the more powerful Choi (2006) and Lopez (2009). The results are in favor of the hypothesis of unemployment hysteresis for the FORs' unemployment rates.

Moreover, this study has some major policy implications. On the one hand, the presence of hysteresis invalidates the well-stated view that Keynesian demand-driven policies are inefficient in the long-run. The long-run rate is dependent of the past behavior of unemployment (path-dependent), hence all measures reducing the current unemployment rate is likely to be effective. This follows Roed (1997)'s suggestion that "a macroeconomic policy that prevents unemployment from rising in the first place may be worthwhile, even though it is viewed as too expensive in the short run" (Roed, 1997, p. 412-413). On the other hand, in the context of hysteresis, the effectiveness of demand-driven policies does not mean that supply-driven policies are inappropriate in fighting unemployment. In fact, the latter will remain the most efficient if nominal wage rigidity, *i.e.* the indexation of the nominal wage on the price level, is weak in the short run.

<sup>12</sup> The conclusions are robust to a change in data that considers all the combinations of three regions.

Furthermore, it is essential to understand the hysteretic factors when designing the policy. Roed (1997) isolates several sources of hysteresis. Among them, the theories of the “Insider-outsider” effects and the “human capital depreciation” seem to be the best explanations for the FORs’ case. Based on the “Insider-outsider” theory, demand-driven policies are effective if they are not anticipated by the employed workers. In contrast, the “human capital depreciation” theory suggests that targeted structural measures should supplement the conventional macroeconomic employment policies. McCausland and Theodossiu (2004) support this idea and show that supply-side policies should encourage opportunities for training instead of focusing on reducing employee protection. All in all, it would be important to clearly identify the underlying reasons for unemployment. However, this is beyond the scope of this work, but should be investigated in a future study.

## References

- Arestis, Ph., and Mariscal, B.-F.I. (1999), “Unit roots and structural breaks in OECD countries”, *Economics Letters*, 65: 149-156.
- Blanchard, O., and Summers, L. (1986), “Hysteresis and the European unemployment problem”, *NBER Macroeconomics Annual*, 1, MIT Press, Cambridge, MA.
- Breitung, J., and Pesaran, M.H. (2008), “Unit roots and cointegration in panels”, forthcoming in Mathyas, L., and Sevestre P. (ed.), *The Econometrics of Panel Data* (Third Edition), Kluwer Academic Publishers.
- Camarero, M., Carrion-i-Silvestre, J.L., and Tamarit, C. (2006), “Testing for hysteresis in unemployment in OECD countries: New evidence using stationarity panel tests with breaks”, *Oxford Bulletin of Economics and Statistics*, 68(2): 167-182.
- Chang, T., Yang, M.J., Liao, H.-C., and Lee, C.-H. (2007), “Hysteresis in unemployment: empirical evidence from Taiwan’s region data based on panel unit root tests”, *Applied Economics*, 39: 1335-1340.
- Choi, I. (2006), “Combination unit root tests for cross-sectionally correlated panels”, *Econometric Theory and Practice: Frontiers of analysis and Applied Research: Essays in honor of Peter C.B. Phillips*, Cambridge University Press.
- Dickey, D.A., and Fuller, W.A. (1981), “Likelihood ratio statistics for autoregressive time series with a unit root”, *Econometrica*, 49: 1057-1072.
- Elliott, G., Rothenberg, T. and Stock, J.H. (1996), “Efficient tests for an autoregressive unit root”, *Econometrica*, 127: 421-441.
- Gomes, F., and Gomes da Silva, C. (2008), “Hysteresis vs. natural rate of unemployment in Brazil and Chile”, *Applied Economics Letters*, 15: 53-56.
- Gomes, F., and Gomes da Silva, C. (2009), “Hysteresis versus NAIRU and convergence versus divergence: the behavior of regional unemployment rates in Brazil”, *The Quarterly Review of Economics and Finance*, 49: 308-322.
- Im, K.S., Pesaran, M.H., and Shin, Y. (2003), “Testing for unit roots in heterogeneous panels”, *Journal of Econometrics*, 115: 53-74.
- Leon-Ledesma, M.A. (2002), “Unemployment hysteresis in the US and the EU: a panel data approach”, *Bulletin of Economic Research*, 54: 95-105.
- Levin, A., Lin, C.F., and Chu, C.J. (2002), “Unit root tests in panel data: asymptotic and finite-sample properties”, *Journal of Econometrics*, 108: 1-24.
- Lopez, C. (2009) “A panel unit root test with good power in small samples”, *Econometrics Review*, 28(4): 295-313.

- McCausland, W.D., and Theodossiou, I. (2004), “Training and hysteresis effects on the wage inflation – unemployment relationship”, *Journal of Post Keynesian Economics*, 27(1): 67-85.
- Maddala, G.S., and Wu, S. (1999), “A comparative study of unit root tests with panel data and a new simple test”, *Oxford Bulletin of Economics and statistics*, 61: 631-652.
- Mitchell, W.F. (1993), “Testing for unit roots and persistence in OECD unemployment rates”, *Applied Economics*, 25: 1489-1501.
- Murray, C.J., and Papell, D.H. (2000), “Testing unit roots in panels in the presence of structural change with an application to OECD unemployment”, in Baltagi B.H. (ed.), *Nonstationary Panels, Panel Cointegration, and Dynamic Panels*, 15, JAI Press, Elsevier Science Inc. New York, USA: 223-238.
- Ng, S., and Perron, P. (2001), “Lag length selection and the construction of unit root tests with good size and power”, *Econometrica*, 69: 1519-1554.
- O’Connell, P. (1998), “The overvaluation of purchasing power parity”, *Journal of International Economics*, 44: 1-19.
- Papell, D.H., and Theodoridis, H. (2001), “The choice of numeraire currency in panel tests of purchasing power parity”, *Journal of Money, Credit and Banking*, 33: 790-803.
- Phelps, E. (1994), *Structural slumps: The modern equilibrium theory of unemployment, interest, and assets*, Harvard University Press, Cambridge, MA.
- Roed, K. (1996), “Unemployment hysteresis – macroevidence from 16 OECD countries”, *Empirical Economics*, 21: 589-600.
- Roed K. (1997), “Hysteresis in unemployment”, *Journal of Economic Survey*, 11(4): 389-418.
- Song, F.M., and Wu, Y. (1997), “Hysteresis in unemployment: evidence from 48 U.S. states”, *Economic Inquiry*, 35: 235-244.
- Song, F.M., and Wu, Y. (1998), “Hysteresis in unemployment: evidence from OECD countries”, *The Quarterly Review of Economics and Finance*, 38: 181-192.
- Yilanci, V. (2008), “Are unemployment rates nonstationary or nonlinear? Evidence from 19 OECD countries”, *Economics Bulletin*, 3(47): 1-5.

## Documents de Travail

310. M. Crozet, I. Méjean et S. Zignago, "Plus grandes, plus fortes, plus loin...Les performances des firmes exportatrices françaises," Décembre 2010
311. J. Coffinet, A. Pop and M. Tiesset, "Predicting financial distress in a high-stress financial world: the role of option prices as bank risk metrics," Décembre 2010
312. J. Carluccio and T. Fally, "Global Sourcing under Imperfect Capital Markets," January 2011
313. P. Della Corte, L. Sarno and G. Sestieri, "The Predictive Information Content of External Imbalances for Exchange Rate Returns: How Much Is It Worth?," January 2011
314. S. Fei, "The confidence channel for the transmission of shocks," January 2011
315. G. Clette, S. Chang and M. Konte, "The decreasing returns on working time: An empirical analysis on panel country data," January 2011
316. J. Coffinet, V. Coudert, A. Pop and C. Povel, "Two-Way Interplays between Capital Buffers, Credit and Output: Evidence from French Banks," February 2011
317. G. Clette, N. Dromel, R. Lecat, and A-Ch. Paret, "Production factor returns: the role of factor utilisation," February 2011
318. S. Malik and M. K Pitt, "Modelling Stochastic Volatility with Leverage and Jumps: A Simulated Maximum Likelihood Approach via Particle Filtering," February 2011
319. M. Bussière, E. Pérez-Barreiro, R. Straub and D. Taglioni, "Protectionist Responses to the Crisis: Global Trends and Implications," February 2011
320. S. Avouyi-Dovi and J-G. Sahuc, "On the welfare costs of misspecified monetary policy objectives," February 2011
321. F. Bec, O. Bouabdallah and L. Ferrara, "the possible shapes of recoveries in Markov-switching models," March 2011
322. R. Coulomb and F. Henriot, "Carbon price and optimal extraction of a polluting fossil fuel with restricted carbon capture," March 2011
323. P. Angelini, L. Clerc, V. Cúrdia, L. Gambacorta, A. Gerali, A. Locarno, R. Motto, W. Roeger, S. Van den Heuvel and J. Vlček, "BASEL III: Long-term impact on economic performance and fluctuations," March 2011
324. H. Dixon and H. Le Bihan, "Generalized Taylor and Generalized Calvo price and wage-setting: micro evidence with macro implications," March 2011
325. L. Agnello and R. Sousa, "Can Fiscal Policy Stimulus Boost Economic Recovery?," March 2011
326. C. Lopez and D. H. Papell, "Convergence of Euro Area Inflation Rates," April 2011
327. R. Kraeusel and S. Krause, "Has Europe Been Catching Up? An Industry Level Analysis of Venture Capital Success over 1985-2009," April 2011
328. Ph. Askenazy, A. Caldera, G. Gaulier and D. Irac, "Financial Constraints and Foreign Market Entries or Exits: Firm-Level Evidence from France," April 2011
329. J. Barthélemy and G. Cléaud, "Global Imbalances and Imported Disinflation in the Euro Area," June 2011
330. E. Challe and C. Giannitsarou, "Stock Prices and Monetary Policy Shocks: A General Equilibrium Approach," June 2011
331. M. Lemoine, M.E. de la Serve et M. Chetouane, "Impact de la crise sur la croissance potentielle : une approche par les modèles à composantes inobservables," Juillet 2011
332. J. Bullard and J. Suda, "The stability of macroeconomic systems with Bayesian learners," July 2011
333. V. Borgy, X. Chojnicki, G. Le Garrec and C. Schwellnus, "Macroeconomic consequences of global endogenous migration: a general equilibrium analysis," July 2011
334. M. Kejriwal and C. Lopez, "Unit roots, level shifts and trend breaks in per capita output: a robust evaluation," July 2011
335. J. Ortega and G. Verdugo, "Immigration and the occupational choice of natives: a factor proportions approach," July 2011
336. M. Bussiere, A. Chudik and A. Mehl, "How have global shocks impacted the real effective exchange rates of individual euro area countries since the euro's creation?," July 2011
337. J. F. Hoarau, C. Lopez and M. Paul, "Short note on the unemployment of the "french overseas regions"," July 2011

Pour accéder à la liste complète des Documents de Travail publiés par la Banque de France veuillez consulter le site : [http://www.banque-france.fr/fr/publications/documents\\_de\\_travail/documents\\_de\\_travail\\_11.htm](http://www.banque-france.fr/fr/publications/documents_de_travail/documents_de_travail_11.htm)

For a complete list of Working Papers published by the Banque de France, please visit the website: [http://www.banque-france.fr/fr/publications/documents\\_de\\_travail/documents\\_de\\_travail\\_11.htm](http://www.banque-france.fr/fr/publications/documents_de_travail/documents_de_travail_11.htm)

Pour tous commentaires ou demandes sur les Documents de Travail, contacter la bibliothèque de la Direction Générale des Études et des Relations Internationales à l'adresse suivante :

For any comment or enquiries on the Working Papers, contact the library of the Directorate General Economics and International Relations at the following address :

BANQUE DE FRANCE  
49- 1404 Labolog  
75049 Paris Cedex 01  
tél : 0033 (0)1 42 97 77 24 ou 01 42 92 63 40 ou 48 90 ou 69 81  
email : [marie-christine.petit-djemad@banque-france.fr](mailto:marie-christine.petit-djemad@banque-france.fr)  
[michael.brassart@banque-france.fr](mailto:michael.brassart@banque-france.fr)  
[veronique.jan-antuoro@banque-france.fr](mailto:veronique.jan-antuoro@banque-france.fr)  
[nathalie.bataille-salle@banque-france.fr](mailto:nathalie.bataille-salle@banque-france.fr)