
NOTES D'ÉTUDES

ET DE RECHERCHE

**TIME-VARING COEFFICIENTS IN A
GMM FRAMEWORK:
ESTIMATION OF A FORWARD LOOKING
TAYLOR RULE FOR THE FEDERAL RESERVE.**

Harry Partouche

September 2007

NER - E # 177



**TIME-VARING COEFFICIENTS IN A
GMM FRAMEWORK:
ESTIMATION OF A FORWARD LOOKING
TAYLOR RULE FOR THE FEDERAL RESERVE.**

Harry Partouche

September 2007

NER - E # 177

Les Notes d'Études et de Recherche reflètent les idées personnelles de leurs auteurs et n'expriment pas nécessairement la position de la Banque de France. Ce document est disponible sur le site internet de la Banque de France « www.banque-france.fr ».

Working Papers reflect the opinions of the authors and do not necessarily express the views of the Banque de France. This document is available on the Banque de France Website “www.banque-france.fr”.

Time-Varying Coefficients in a GMM Framework: Estimation of a Forward Looking Taylor Rule for the Federal Reserve¹

Harry Partouche²

¹I would like to thank the attendants at the research seminar of the Banque de France for their helpful remarks. I would also like to thank the Banque de France for the year I spent in its research staff. The views expressed are those of the author and not necessarily those of the Banque de France.

²DGTPE, on an internship with DGEI-DIR-POMONE at the Banque de France when the article was prepared. Email: harry.partouche@dgtp.fr

Abstract

This article deals with the estimation of a time-varying coefficients equation with endogenous regressors. A non-parametric approach is proposed, combining the Generalized Method of Moments (GMM) with the smoothing splines literature as in Hodrick and Prescott (1981).

This new method is used to analyze the evolution of a forward-looking Taylor rule for the Federal Reserve (FED) from 1960 until 2006. It suggests that monetary policy accommodated inflation during the 60s and the 70s whereas the chairmanship of P. Volcker was a turning point toward a more aggressive stance on inflation. In addition, monetary policy became more and more countercyclical.

JEL classification: E5; C14; C32

Keywords: Monetary policy rules; Generalized Method of Moments; Time-varying coefficients; Smoothing splines

Résumé

Ce papier traite de l'estimation d'une équation linéaire à coefficients variables dans le temps et dont les erreurs sont corrélées aux variables explicatives. On développe une méthode d'estimation non paramétrique qui emprunte à la fois à la Méthode des Moments Généralisée (MMG) et à celle des "smoothing splines" type Hodrick-Prescott (1981).

Dans la lignée des travaux de Taylor (1993), on applique cette méthodologie à l'étude de l'évolution d'une règle de politique monétaire forward-looking pour la FED. Au niveau des résultats, la réponse de long terme du taux d'intérêt à l'inflation est croissante au cours de la période. En particulier, on montre que la politique monétaire est accommodante jusqu'à la fin des années 1970. La réponse à l'écart de production croît elle aussi continuellement, ce qui constitue un résultat nouveau.

Codes JEL : E5; C14; C32

Mots Clés : Règle de politique monétaire; Méthode des moments généralisés; Equation à coefficients aléatoires; Smoothing splines

Non-technical summary

Taylor rules have now become very popular to describe the decision making of central bankers. They do not only succeed in terms of econometric estimation but they are also relevant for a theoretical use, for instance to ensure the uniqueness of the equilibrium in DSGE models. However, monetary policy is one of the numerous fields subject to variations across time. Central bankers change as well as the understanding of the economy or even the aims of monetary policy. The policy implications of such time variations are important. There is a debate among economists to know whether the poor economic performance in the United States during the 70s was just the result of adverse shocks or if it was policy related, debate known as bad luck vs bad policy.

Many authors have studied the possible time variation in Taylor rules. Clarida, Gali and Gertler (2000) estimate monetary policy rules on subperiods they assume to be homogenous. Kim and Nelson (2006) go further, allowing for continuous changes in the coefficients of the rule. Our stand is to estimate such time-varying coefficients. To do so, I try to impose as few priors as possible. Especially, I do not have any prior, neither on the rule at the beginning of our sample nor on the form of the evolution. Especially, we do not impose the time variation to be a structural break.

The results confirm that monetary policy accomodated inflation during the 60s and the 70s and that the appointment of P.Volcker was a turning point toward a more aggressive stance on inflation. The profile of the long term response of the interest rate to the inflation is very close to a structural break. At the same time, the rule became more and more countercyclical but in a continuous way.

Résumé non technique

L'utilisation de règles de Taylor s'est généralisée dans l'analyse de la politique monétaire. Elles sont utiles non seulement pour l'estimation de règles de politique monétaire mais jouent aussi un rôle théorique central, notamment pour assurer la détermination locale de l'équilibre dans les modèles DSGE. Cependant, la politique monétaire est sujette à des variations importantes au cours du temps. Les banquiers centraux se succèdent, la connaissance du fonctionnement de l'économie s'améliore et les objectifs assignés à la politique monétaire changent. Ces évolutions ont des conséquences importantes sur la politique économique. Ainsi, les économistes cherchent à savoir si la politique monétaire a joué un rôle dans les performances économiques décevantes des années soixante-dix aux Etats-Unis ou si elles étaient entièrement liées à des chocs adverses.

Plusieurs auteurs ont étudié l'évolution de la politique monétaire. Clarida, Gali et Gertler (2000) estiment des règles de politique monétaire sur des sous périodes a priori homogènes. Kim et Nelson (2006) vont plus loin en postulant une évolution continue des coefficients de la règle. Nous poursuivons dans cette direction en essayant d'imposer le moins d'a priori possibles. En particulier, nous n'imposons pas la forme d'évolution des coefficients ou leur valeur en début d'échantillon.

Les résultats confirment le caractère accommodant de la politique monétaire pendant les années soixante et soixante-dix ainsi que le tournant provoqué par la nomination de P. Volcker. En particulier, l'évolution de la réponse de long terme du taux d'intérêt à l'inflation est très proche d'une rupture structurelle. Dans le même temps, la politique monétaire est devenue de plus en plus contracyclique mais de manière continue.

1 Introduction

This paper deals with the estimation of a time-varying coefficients equation. In what follows, these coefficients are assumed to follow a random walk, allowing for permanent changes. Moreover, I suppose that the error term is correlated to the explanatory variables, which forbids the use of the Kalman filter. This endogeneity problem arises because of the presence of expected values in the regressors: under the rational expectations hypothesis, these expectations are replaced with future variables.

I use this procedure to assess the way the FED has set its interest rate over the past 40 years. Simple monetary policy rules depending on expected inflation and output gap with some degree of interest rate smoothing fit the data quite well as documented in Clarida, Gali and Gertler (2000) for instance. Nevertheless, when the time period is too long, it is difficult to rely on a constant rule. Changes may occur because of a better economic knowledge or changes in the doctrine or even structural changes in the economy. For instance, Romer and Romer (2002) see changes in the understanding of the functioning of the economy as the main reason for the changes in the way monetary policy was conducted. Many authors studied the evolution in the conduct of monetary policy, to assess whether the poor economic performance in the United States during the 70s was the result of bad luck or bad policies. Sims and Zha (2006) or Primiceri (2005) find that the changes in the volatility of the shocks were the main source of time variation. Cogley and Sargent (2005) account for both sources of time variation.

Clarida, Gali and Gertler (2000) use the GMM framework to estimate monetary policy rules on subperiods they assume to be homogenous. They find that monetary policy accommodated inflation in the 60s and the 70s and a long term response of the interest rate to future inflation close to two under P.Volcker or A.Greenspan. The choice of the break date may seem a bit arbitrary and there is a risk to carry out an estimation on too short time periods.

Kim and Nelson (2006) estimate monetary rules with a two-step procedure close to the two stages least squares (2SLS) allowing for the use of the Kalman filter. Their approach, described in appendix A.2, allows for heteroskedasticity of the monetary policy shock and thus time periods during which discretion increased. However, their results may be questioned on several grounds: they only display results of filtered estimates instead of smoothed estimates³; initial conditions are estimated with the 2SLS on 40 quarters. The impact of initial conditions is decreasing when time goes on but, since their sample begins in 1970, their results, at least until 1980, are sensitive to this fragile prior. They

³The likelihood is computed from the prediction error decomposition based on the forward step of the Kalman filter. Once one has the parameters that maximize the likelihood, it is easy to compute filtered estimates but also smoothed estimates based on the backward recursion of the Kalman filter. Smoothed estimates are hence based on all the information available.

account for this uncertainty in the initial variance of the state vector but, since they use filtered estimates, the first years depend strongly on this prior whereas the use of smoothed estimates would have partly solved this issue. One can notice that there is another solution to estimate initial conditions: the use of generalized least squares as in Lemoine and Pelgrin (2003). Finally, they choose a particular form of correlation between the regressors and the error term and a particular form of heteroskedasticity of the error term, namely a GARCH(1,1).

The use of real-time forecasts, as Boivin (2006), is another way to get round the endogeneity problem. The model is then a standard state-space problem. Boivin (2006) uses real-time forecasts provided by the Greenbook. This real-time approach raises some questions. The unemployment gap is negative on the whole part of the sample⁴. As the state vector follows a random walk, Boivin (2006) chooses some particular initial conditions, a long term response of the interest rate to inflation equal to 2 and a long term response of the interest rate to the unemployment gap of 2.5 in 1970. Finally, the results seem to depend on how heteroskedasticity is handled.

I suggest a new estimation strategy which aims at minimizing the empirical counterpart of moment conditions subject to the coefficients evolution. My approach belongs to the smoothing splines litterature in line with the seminal paper by Hodrick and Prescott (1981). I get a whole class of estimates depending on the weight put on the empirical counterpart of the moment conditions and on the amount of time variation allowed in the coefficients. It is then possible to choose the estimate that minimizes the distance between the true coefficients and the estimated ones and which is locally optimal too. My method makes minimal assumptions on initial conditions or on the error terms. The results show the accommodative pattern during the 60s and the 70s and the turning point at the end of the 70s when P.Volcker was appointed chairman of the Board. As opposed to Kim and Nelson (2006), the results suggest a countercyclical feature increasing over the sample.

Section 2 describes the approach, section 3 computes the estimates and derives the optimality conditions and section 4 illustrates the implementation of this methodology on the FED's behaviour between 1960 and 2006.

⁴Orphanides (2004) notices that the output gap is below zero on the most part of the period, which means that forecasters had always anticipated an economy below its potential. Boivin (2006) uses rather the unemployment gap defined as the difference between the natural rate of unemployment and the expected unemployment rate, setting the natural rate of unemployment equal to the historical average of unemployment in the past. This choice gives data similar to Orphanides (2004). One can notice that such data does not verify the rational expectations hypothesis.

2 Econometric strategy

2.1 Equation of interest and estimation strategy

This paper focuses on estimating a forward-looking Taylor rule:

$$i_t = a_{0,t} + a_{\pi,t}E_{t-1}(\pi_{t+h}) + a_{y,t}E_{t-1}(y_{t+l}) + a_{i,t}i_{t-1} + \omega_t \quad (1)$$

where i_t , π_t , y_t and ω_t stand for the Federal Funds Rate, the inflation at an annual rate, the output gap and a monetary policy shock. The vector of coefficients $\delta_t = (a_{0,t}, a_{\pi,t}, a_{y,t}, a_{i,t})'$ follows a random walk:

$$\begin{cases} \delta_t = \delta_{t-1} + u_t \\ u_t \sim \mathcal{N}(0, Q_u) \end{cases}$$

From the notations, (1) contains expectations $E_{t-1}(\cdot) = E(\cdot | I_{t-1})$ conditional on all the information set available at the beginning of date t which consists of the interest rate, the output gap, the inflation, and other variables until $t-1$. In other words, when the central bank takes its decision at the beginning of the quarter, all the current variables are unknown. Under the rational expectations hypothesis, (1) can be expressed as:

$$i_t = a_{0,t} + a_{\pi,t}\pi_{t+h} + a_{y,t}y_{t+l} + a_{i,t}i_{t-1} + v_t \quad (2)$$

with $v_t = -a_{\pi,t}(\pi_{t+h} - E_{t-1}(\pi_{t+h})) - a_{y,t}(y_{t+l} - E_{t-1}(y_{t+l})) + \omega_t$. The error term v_t in (2) is thus correlated to explanatory variables π_{t+h} and y_{t+l} for two possible reasons: first, forecast errors $\pi_{t+h} - E_{t-1}(\pi_{t+h})$ and $y_{t+l} - E_{t-1}(y_{t+l})$ are correlated with π_{t+h} and y_{t+l} ; second, if the monetary policy shock ω_t affects the real economy between t and $t+h/t+l$, it is correlated with π_{t+h} and y_{t+l} too.

In the following, $x_t = i_t$ is the endogenous variable, here the interest rate. The K explanatory variables are $z_t = (1, \pi_{t+h}, y_{t+l}, i_{t-1})'$ and the time-varying coefficients are $\delta_t = (a_{0,t}, a_{\pi,t}, a_{y,t}, a_{i,t})'$. K^i instrumental variables $Z_t \in I_{t-1}$ are used to deal with the endogeneity source in (2). If the coefficients were set equal to some δ , the dynamic GMM would apply:

$$E(x_t - z_t'\delta | I_{t-1}) = 0 \Rightarrow E((x_t - z_t'\delta) Z_t) = 0$$

Properties of static GMM are valid and especially the optimality conditions. The 2SLS are used and are equivalent to the GMM when the error term is homoskedastic. To deal with the potential heteroskedasticity of the disturbance term, the Three Stages Least Squares (3SLS) are applied. The GMM framework allows to estimate a small number of coefficients, here four, with many moment conditions. The weighting matrix S arbitrates between these moment conditions:

$$\min_{\delta} \left\{ \left(\sum_{t=1}^T (x_t - z_t'\delta) Z_t \right)' S \left(\sum_{t=1}^T (x_t - z_t'\delta) Z_t \right) \right\} \quad (3)$$

This minimization problem is equivalent to the 2SLS or the 3SLS for an appropriate S . Kim and Nelson (2006) modify the two-step approach. On the contrary, I propose to adapt the minimization problem (3).

In my setup, one can still write moment conditions:

$$E(x_t - z_t' \delta_t | I_{t-1}) = 0 \Rightarrow E((x_t - z_t' \delta_t) Z_t) = 0$$

Since there are less moment conditions than the number of unknown coefficients, the amount of time variation of the coefficients has to be limited, which can be written as a constrained minimization problem:

$$\begin{aligned} \min_{(\delta_i)_{i \in [0, T]}} & \left\{ \left(\sum_{t=1}^T (x_t - z_t' \delta_t) Z_t \right)' S \left(\sum_{t=1}^T (x_t - z_t' \delta_t) Z_t \right) \right\} \\ \text{u.c.} & \quad \forall k \in [1, K], \sum_{t=1}^T (\delta_{k,t} - \delta_{k,t-1})^2 = T Q_{emp, kk} \end{aligned} \quad (4)$$

where Q_{emp} is the empirical covariance matrix of $\Delta \delta_t$. Program (4) may appear arbitrary. In fact, it is the discrete formulation of a more general functional problem:

$$\begin{aligned} \min_{f \in C^1(\mathbb{R}, \mathbb{R}^K)} & \quad C(x(t), z(t), Z(t), f(t)) \\ & \int \left\| \frac{\partial^m f}{\partial t^m} \right\|^2 dt = q \end{aligned}$$

where $m > 0$. This paper adopts a non-parametric estimation strategy, smoothing splines to be precise. The quadratic penalization of the first difference of δ_t is quite standard in the literature, see Craven and Wahba (1978) for instance. The higher the m , the smoother the f . I focus on $m = 1$, the first difference in the discrete case is equivalent to the first derivative in the continuous case. Therefore, I choose the m which constrains the less the transition to be smooth. Nevertheless, this penalization of the variation in the coefficients tends to avoid one-time breaks.

The choice of S has to be grounded as well as the amount of variability in the coefficients, that is Q_{emp} , where Q_{emp} is diagonal here.

2.2 Economic interpretation

In the standard neo-keynesian framework, three equations describe the economy: the New Keynesian Philipps Curve (NKPC), the IS curve and the monetary policy rule, here forward looking⁵:

$$\begin{cases} \pi_t = 4\kappa y_t + \beta E_t(\pi_{t+1}) + \varepsilon_t^p \\ y_t = E_t(y_{t+1}) - \sigma [i_t - E_t(\pi_{t+1})] + \varepsilon_t^g \\ i_t = a_\pi E_{t-1}(\pi_{t+h}) + a_y E_{t-1}(y_{t+l}) + a_i i_{t-1} + \varepsilon_t^i \end{cases} \quad (5)$$

⁵ π_t and i_t are at an annual rate, which explains the presence of 4κ instead of κ .

where $\varepsilon_t^p, \varepsilon_t^g, \varepsilon_t^i$ respectively stand for a mark-up shock, a demand shock and a monetary policy shock and where π_t, y_t and i_t are taken as deviation to their steady state values. In the present paper, I will only estimate the last equation of (5).

In the application, both the reduced form (1) and a more structural form will be commented:

$$\begin{aligned} i_t &= (1 - \rho_t) i_t^* + \rho_t i_{t-1} + \omega_t \\ i_t^* &= \beta_{0,t} + \beta_{\pi,t} E_{t-1} (\pi_{t+h}) + \beta_{y,t} E_{t-1} (y_{t+l}) \\ &= \bar{r}_t + \pi_t^* + \beta_{\pi,t} (E_{t-1} (\pi_{t+h}) - \pi_t^*) + \beta_{y,t} E_{t-1} (y_{t+l}) \end{aligned} \quad (6)$$

derived from (1) with the transformation:

$$(a_{0,t}, a_{\pi,t}, a_{y,t}, a_{i,t})' = ((1 - \rho_t) \beta_{0,t}, (1 - \rho_t) \beta_{\pi,t}, (1 - \rho_t) \beta_{y,t}, \rho_t)'$$

i_t^* is the target interest rate which is reached gradually by the FED. $\beta_{\pi,t}$ is the elasticity of the target to expected inflation or the long-term response of the interest rate to inflation. The coefficient $\beta_{0,t}$ has no simple structural interpretation. It is linked to the equilibrium real rate \bar{r}_t and to the inflation objective π_t^* : $\beta_{0,t} = \bar{r}_t + (1 - \beta_{\pi,t}) \pi_t^*$.

Once $(\delta_t)_{t \in [1, T]}$ is known, one can see whether and when the equilibrium is locally determined. But the answer depends on the other structural equations in (5). The estimation of such equations in a time-varying framework goes further than the present study so the coefficients β, σ and κ will be held constant⁶.

3 Estimation of a time-varying parameter model in a Generalized Method of Moments framework

The minimization problem (4) can be written with the lagrangian:

$$\min_{(\delta_t)_{t \in [0, T]}} \left(\frac{1}{T} \sum_{t=1}^T (x_t - z_t' \delta_t) Z_t \right)' S \left(\frac{1}{T} \sum_{t=1}^T (x_t - z_t' \delta_t) Z_t \right) + \frac{1}{T} \sum_{t=1}^T T^2 \Delta \delta_t' R \Delta \delta_t \quad (7)$$

with R being the Lagrange multiplier, a definite positive matrix. (4) is a special case with R being diagonal.

⁶We neglect structural variations in the real economy. Sims and Zha (2006) consider VAR models with switching regimes where they allow for changes both in the variance of the shocks and in the coefficients. The model with changes in the volatility only gives the best fit to the data, but among time-varying coefficients models, the best fit is the model which allows only the monetary policy rule to change.

Notice that (7) is a numerical procedure which can be solved independently of any statistical model. It is a non-parametric problem which belongs to the smoothing splines framework. The underlying statistical model is:

$$\begin{cases} x_t = z_t' \delta_t + v_t \\ E(Z_t v_t) = 0 \\ \delta_t = \delta_{t-1} + u_t \\ u_t \overset{iid}{\approx} \mathcal{N}(0, Q_u) \end{cases} \quad (8)$$

A whole class of estimates can be obtained, one for each possible choice of R and S . (8) will be useful to study the statistical properties of the proposed estimates.

Hodrick and Prescott's approach belongs to this kind of methods. The HP filter extracts a trend $\hat{y}_t(\lambda)$ from the data x_t :

$$\hat{y}_t(\lambda) = \arg \min_{(y_i)_{i \in [1, T]}} \sum_{t=1}^T (x_t - y_t)^2 + \lambda \sum_{t=3}^T (\Delta^2 y_t)^2 \quad (9)$$

3.1 Solution to the minimization problem

In this section $(\delta_t)_{t \in [0, T]}$ stand for the estimated coefficients solution of (7) and not the true value of these coefficients. Define:

$$\begin{aligned} \Psi(\delta_1, \dots, \delta_T) &= \frac{1}{T} \sum_{t=1}^T (x_t - z_t' \delta_t) Z_t \\ \chi &= \frac{1}{T} \sum_{t=1}^T z_t Z_t' \text{ and } \Omega = \frac{1}{T} \sum_{t=1}^T x_t Z_t \end{aligned}$$

The first order conditions of (7) are:

$$\begin{cases} \forall t \in [1, T-1], z_t Z_t' S \Psi + T^2 R (\delta_{t+1} - 2\delta_t + \delta_{t-1}) = 0 \\ -z_T Z_T' S \Psi + T^2 R (\delta_T - \delta_{T-1}) = 0 \\ T^2 R (\delta_1 - \delta_0) = 0 \end{cases}$$

After some calculation⁷, let us look for Ψ and $(\delta_t)_{t \in [0, T]}$ such that:

$$\begin{cases} \forall t \in [1, T], \delta_t = \delta_0 + R^{-1} \frac{1}{T^2} \sum_{j=1}^t \sum_{i=j}^T z_i Z'_i S \Psi \\ \Psi = \frac{1}{T} \sum_{t=1}^T (x_t - z'_t \delta_t) Z_t \\ \chi S \Psi = 0 \end{cases} \quad (10)$$

(10) involves:

$$\Psi = \frac{1}{T} \sum_{t=1}^T x_t Z_t - \frac{1}{T} \sum_{i=1}^T Z_i z'_i \delta_0 - \frac{1}{T^3} \sum_{j=1}^T \left(\sum_{i=j}^T Z_i z'_i \right) R^{-1} \left(\sum_{i=j}^T z_i Z'_i \right) S \Psi$$

I rewrite the latest equation:

$$\begin{aligned} J(R, S) \Psi &= \Omega - \chi' \delta_0 \\ J(R, S) &= I_{K^i} + \frac{1}{T^3} \sum_{j=1}^T \left(\sum_{i=j}^T z_i Z'_i \right)' R^{-1} \left(\sum_{i=j}^T z_i Z'_i \right) S \end{aligned} \quad (11)$$

From (11), δ_0 is sufficient to know Ψ . δ_0 is given using the last equation of (10):

$$\chi S \Psi = 0 \Rightarrow \chi S J^{-1} \chi' \delta_0 = \chi S J^{-1} \Omega \Rightarrow \delta_0 = (\chi S J^{-1} \chi')^{-1} \chi S J^{-1} \Omega \quad (12)$$

(12) reminds us of the GMM formula with weighting matrix SJ^{-1} which is definite positive as can be seen from (11).

$$\begin{aligned} {}^7 T^2 R (\delta_T - \delta_{T-1}) &= T^2 R \sum_{t=1}^{T-1} [(\delta_{t+1} - \delta_t) - (\delta_t - \delta_{t-1})] + T^2 R (\delta_1 - \delta_0) \\ &\Rightarrow z_T Z'_T S \Psi = - \left(\sum_{t=1}^{T-1} z_t Z'_t \right) S \Psi \Rightarrow \left(\sum_{t=1}^T z_t Z'_t \right) S \Psi = 0 \Rightarrow \chi S \Psi = 0 \end{aligned}$$

Lets compute $\forall t \in [1, T]$ a formula of $\Delta \delta_t$ function of Ψ :

$$\begin{aligned} T^2 R (\delta_t - \delta_{t-1}) &= T^2 R \sum_{i=1}^{t-1} [(\delta_{i+1} - \delta_i) - (\delta_i - \delta_{i-1})] + T^2 R (\delta_1 - \delta_0) \\ &\Rightarrow T^2 R (\delta_t - \delta_{t-1}) = - \left(\sum_{i=1}^{t-1} z_i Z'_i \right) S \Psi = \left(\sum_{i=t}^T z_i Z'_i \right) S \Psi \end{aligned}$$

$\forall t \in [1, T]$, there is a formula of δ_t function of Ψ :

$$\begin{aligned} T^2 R (\delta_t - \delta_0) &= \left(\sum_{j=1}^t \sum_{i=j}^T z_i Z'_i \right) S \Psi = \left(\sum_{i=1}^T \min(i, t) z_i Z'_i \right) S \Psi \\ &\Rightarrow \delta_t = \delta_0 + R^{-1} \frac{1}{T^2} \left(\sum_{i=1}^T \min(i, t) z_i Z'_i \right) S \Psi \end{aligned}$$

3.2 Closed form formula

From now on, $\hat{\delta}_t$ refers to the estimated value of the coefficients whereas δ_t refers to the true value of the coefficients. In fine, with R and S given, the formula is:

$$\hat{\delta}_t(R, S) = \left\{ (\chi S J^{-1} \chi')^{-1} \chi S J^{-1} + \frac{1}{T^2} R^{-1} \left(\sum_{i=1}^T \min(i, t) z_i z_i' \right) \times \right. \\ \left. S J^{-1} \left(I_{K^i} - \chi' (\chi S J^{-1} \chi')^{-1} \chi S J^{-1} \right) \right\} \Omega \quad (13)$$

Let:

$$M_t(R, S) = \left\{ (\chi S J^{-1} \chi')^{-1} \chi S J^{-1} + \frac{1}{T^2} R^{-1} \left(\sum_{i=1}^T \min(i, t) z_i z_i' \right) \times \right. \\ \left. S J^{-1} \left(I_{K^i} - \chi' (\chi S J^{-1} \chi')^{-1} \chi S J^{-1} \right) \right\}$$

The time t estimate depends on all the data set. (13) gives:

$$\hat{\delta}_t = M_t \frac{1}{T} \sum_{i=1}^T Z_i x_i$$

Since $M_t \chi' = I_K$, the difference between the estimate and the true value is:

$$\hat{\delta}_t - \delta_t = M_t \frac{1}{T} \sum_{i=1}^T \left[Z_i z_i' \left(\sum_{j=1}^i u_j - \sum_{j=1}^t u_j \right) + Z_i v_i \right] \\ \hat{\delta}_t - \delta_t = M_t \left[-\frac{1}{T} \sum_{j=1}^{t-1} \left(\sum_{i=1}^j Z_i z_i' \right) u_j + \frac{1}{T} \sum_{j=t+1}^T \left(\sum_{i=j}^T Z_i z_i' \right) u_j \right]$$

Conditional on the data generating process (8), the mean squared error is given by⁸:

$$MSE_t = E \left(\begin{bmatrix} \hat{\delta}_t - \delta_t \\ \hat{\delta}_t - \delta_t \end{bmatrix} \begin{bmatrix} \hat{\delta}_t - \delta_t \\ \hat{\delta}_t - \delta_t \end{bmatrix}' \right) \\ MSE_t = \frac{1}{T} M_t \left[\frac{1}{T} \sum_{i=1}^T Z_i Z_i' E(v_i^2) + \frac{1}{T} \sum_{j=1}^{t-1} \left(\frac{1}{T} \sum_{i=1}^j Z_i z_i' \right) T^2 Q_u \left(\frac{1}{T} \sum_{i=1}^j Z_i z_i' \right)' \right. \\ \left. + \frac{1}{T} \sum_{j=t+1}^T \left(\frac{1}{T} \sum_{i=j}^T Z_i z_i' \right) T^2 Q_u \left(\frac{1}{T} \sum_{i=j}^T Z_i z_i' \right)' \right] M_t' \quad (14)$$

3.3 Choice of (R, S)

Given (R, S) , one can solve (7), thus obtaining a whole class of estimates. In order to choose the best one, I rely on an efficiency criterion, trying to minimize

⁸This formula accounts for the heteroskedasticity of ν_t . If the forward-looking horizon h or l exceeds the current quarter, there might be a source of autocorrelation of ν_t which is not taken into account. Both Kim and Nelson (2006) and Boivin (2006) choose situations such that they can ignore autocorrelation.

the mean squared error of the estimate. One can prove that this estimate is the best possible in terms of the global distance between the curve of the true coefficients and the curve of the estimates. Since (14) depends on Q_u , the first step is to know Q_u , the covariance matrix of the innovation of δ_t . To achieve this, I use the Median Unbiased Estimate developed in Stock and Watson (1998)⁹.

3.3.1 Modification of Stock and Watson (1998) to deal with endogeneity

This section adapts Stock et Watson's median unbiased estimate to allow for endogeneity as described in Sowell (1996). Following Stock and Watson (1998), assume that there is μ such as, for every T , the covariance matrix Q_u can be put in the restricted form:

$$Q_u = \frac{\mu^2}{T^2} \bar{Q} \quad (15)$$

where \bar{Q} is fixed to some particular value. The restricted form (15) can be seen in terms of frequency of the observations: for a given time period, if the number of observations is two times larger, the variance between two consecutive coefficients is two times smaller.

The state vector δ_t is a discretization of a time continuous process¹⁰:

$$\delta_t = \delta_0 + \frac{1}{\sqrt{T}} \mu \bar{Q}^{\frac{1}{2}} B_2 \left(\frac{t}{T} \right)$$

where $B_2 : \mathbb{R} \rightarrow \mathbb{R}^K$ is a standard brownian motion. Let us define for each $s \in [0, 1]$:

$$\xi_T(s, \delta) = \frac{1}{\sqrt{T}} \sum_{t=1}^{\lfloor sT \rfloor} (x_t - z_t' \delta) Z_t$$

⁹Here, a maximum likelihood (ML) approach can not be used without additional informa-

tion on the distribution of the shocks. Moreover Stock and Watson (1998) show that when one estimates Q_u with ML, there is pile-up problem in the algorithm, which means that it converges far too often toward zero. That is why they build an alternative approach.

¹⁰ $u_t = \frac{\mu}{T} \bar{Q}^{\frac{1}{2}} \eta_t$ where $\eta_t \approx \mathcal{N}(0, 1)$ hence $\delta_t = \delta_0 + \frac{1}{\sqrt{T}} \mu \bar{Q}^{\frac{1}{2}} \frac{1}{\sqrt{T}} \sum_{k=1}^t \eta_k$ and from the

definition of a brownian motion $B_2(\cdot), \frac{1}{\sqrt{T}} \sum_{k=1}^{\lfloor sT \rfloor} \eta_k \Rightarrow B_2(s)$

Finally, define Σ , M , S_T and $\hat{\delta}_{GMM,T}$:

$$\begin{aligned}\Sigma &= \lim_{T \rightarrow \infty} E(\xi_T(1, \delta_0) \xi_T(1, \delta_0)') \\ M &= -p \lim_{T \rightarrow \infty} \frac{1}{\sqrt{T}} \frac{\partial \xi_T}{\partial \delta}(1, \delta_0) = E(Z_t z_t') \\ S_T &\xrightarrow{P} \Sigma^{-1} \\ \hat{\delta}_{GMM,T} &= \arg \min_{\delta} \xi_T(1, \delta)' S_T \xi_T(1, \delta)\end{aligned}$$

Theorem 1 in Sowell (1996) gives¹¹:

$$\begin{aligned}S_T^{\frac{1}{2}} \xi_T \left(s, \hat{\delta}_{GMM,T} \right) &\Rightarrow B_1(s) - s \Sigma^{-\frac{1}{2}} M (M' \Sigma^{-1} M)^{-1} \left(\Sigma^{-\frac{1}{2}} M \right)' B_1(1) \\ &\quad + \mu \Sigma^{-\frac{1}{2}} M \bar{Q}^{\frac{1}{2}} \int_0^s \left(B_2(v) - \int_0^1 B_2 \right) dv\end{aligned}\tag{16}$$

where $B_1 : \mathbb{R} \rightarrow \mathbb{R}^{K^i}$ is another standard brownian motion. As can be seen, when there is no endogeneity problem, the same results as Stock and Watson's first theorem can be obtained because $\Sigma \propto M$. In the more general case, the limiting distribution in (16) depends on some nuisance terms $\Sigma^{-\frac{1}{2}} M$ and $\bar{Q}^{\frac{1}{2}}$. Σ and M can be consistently estimated whereas \bar{Q} can not. I make the assumption $\bar{Q} = \text{Diag} \left((M' \Sigma^{-1} M)^{-1} \right)$. It means that the variance of the innovations $u_{i,t}$ is proportionnal to the asymptotic covariance of the GMM estimate and that there is no cross correlation in u_t ¹². This formula is quite natural but appendix A.4 proves the robustness toward this arbitrary choice, mainly in two directions: the diagonal form of \bar{Q} and the measurement error on \bar{Q} 's diagonal terms. This formula is neutral with respect to any multiplicative transformation of the regressors or the instruments and it is the equivalent of the quantity proposed in Stock and Watson (1998). Moreover, the less precise the GMM estimate is for a given coefficient, the more one can think it is due to some time variation in that coefficient. Rewrite (16):

$$\begin{aligned}S_T^{\frac{1}{2}} \xi_T \left(s, \hat{\delta}_{GMM,T} \right) &\Rightarrow W(s, \mu, D) \\ W(s, \mu, D) &= B_1(s) - s D (D' D)^{-1} D' B_1(1) + \mu D \left(\int_0^s B_2(v) dv - s \int_0^1 B_2 \right)\end{aligned}\tag{17}$$

¹¹For any definite positive matrix A , $A^{\frac{1}{2}}$ is the unique definite positive matrix such that $(A^{\frac{1}{2}})^2 = A$.

¹² $\text{corr}(u_{i,t}, u_{j,t}) = 0$ for any $i \neq j$. This is a disputable choice. Since u_t is the innovation in a reduced form, there must be some cross-correlation. As there is no clue on its form, I prefer to remain neutral.

where $D = \Sigma^{-\frac{1}{2}} M \widehat{Q}^{\frac{1}{2}}$ which involves:

$$L_T = \frac{1}{T} \sum_{t=1}^T \xi_T \left(\frac{t}{T}, \widehat{\delta}_{GMM,T} \right)' S_T \xi_T \left(\frac{t}{T}, \widehat{\delta}_{GMM,T} \right) \implies \int_0^1 W(s, \mu, D)' W(s, \mu, D) ds$$

$$\sup_{s \in [s_0, s_1]} \xi_T \left(s, \widehat{\delta}_{GMM,T} \right)' S_T \xi_T \left(s, \widehat{\delta}_{GMM,T} \right) \implies \sup_{s \in [s_0, s_1]} W(s, \mu, D)' W(s, \mu, D)$$

To implement the estimate of μ , one only need to compute L_T and, for each μ , the median $m(\mu)$ of the distribution $\int_0^1 W(s, \mu, D)' W(s, \mu, D) ds$ taking D equal to its estimated value. The estimate of μ is then:

$$\widehat{\mu} = m^{-1}(L_T)$$

Stock and Watson's method is implemented with:

$$\widehat{S}_T^{-1} = \widehat{\Sigma} = \frac{1}{T} \sum_{t=1}^T \left(x_t - z_t' \widehat{\delta}_{2SLS} \right)^2 Z_t Z_t'$$

$$\widehat{M} = \frac{1}{T} \sum_{t=1}^T Z_t z_t'$$

$$\widehat{Q} = \text{Diag} \left(\widehat{M}' \widehat{\Sigma}^{-1} \widehat{M} \right)^{-1}$$

$$\widehat{D} = \widehat{\Sigma}^{-\frac{1}{2}} \widehat{M} \widehat{Q}^{\frac{1}{2}}$$

$$\widehat{\delta}_{GMM,T} = \widehat{\delta}_{3SLS} = \arg \min_{\delta} \xi_T(1, \delta)' S_T \xi_T(1, \delta)$$

3.3.2 Optimal estimate

I have now a whole set of estimates, one for each choice of (R, S) . One can prefer one estimate to another and there are many possible choices. The more natural choice is the estimate that is the closest to the true value of the coefficients, after giving a definition of what close means. My stand is to choose the estimate which has the smallest mean squared error. Moreover, I will show that it is the one closest to the true coefficients. (14) gives for $t = 0$:

$$\widehat{MSE}_0 = \frac{1}{T} M_0 \left[\widehat{\Sigma} + \frac{1}{T} \sum_{t=1}^T \left(\frac{1}{T} \sum_{i=t}^T z_i z_i' \right)' \widehat{\mu}^2 \widehat{Q} \left(\frac{1}{T} \sum_{i=t}^T z_i z_i' \right) \right] M_0' \quad (18)$$

with $M_0 = (\chi S J^{-1} \chi')^{-1} \chi S J^{-1}$. Following (11), define:

$$N = S J^{-1} = \left(S^{-1} + \frac{1}{T} \sum_{k=1}^T \left(\frac{1}{T} \sum_{i=k}^T z_i z_i' \right)' R^{-1} \left(\frac{1}{T} \sum_{i=k}^T z_i z_i' \right) \right)^{-1}$$

Proposition 1 *The optimal (R, S) is the choice that minimizes \widehat{MSE}_0 . The solution is:*

$$\begin{aligned} R^* &= \frac{1}{\widehat{\mu}^2} \widehat{Q}^{-1} \\ S^* &= \widehat{\Sigma}^{-1} \end{aligned} \quad (19)$$

Proof. The demonstration follows the one in the GMM case:

$$\widehat{V} = \widehat{\Sigma} + \frac{1}{T} \sum_{t=1}^T \left(\frac{1}{T} \sum_{i=t}^T z_i Z_i' \right)' \widehat{\mu}^2 \widehat{Q} \left(\frac{1}{T} \sum_{i=t}^T z_i Z_i' \right)$$

If $S = \widehat{\Sigma}^{-1}$ and $R = \frac{1}{\widehat{\mu}^2} \widehat{Q}^{-1}$:

$$N^* = \left(\widehat{\Sigma} + \frac{1}{T} \sum_{t=1}^T \left(\frac{1}{T} \sum_{i=t}^T z_i Z_i' \right)' \widehat{\mu}^2 \widehat{Q} \left(\frac{1}{T} \sum_{i=t}^T z_i Z_i' \right) \right)^{-1} = \widehat{V}^{-1}$$

$$\widehat{MSE}_0^* = \frac{1}{T} \left(\chi \widehat{V}^{-1} \chi' \right)^{-1} \chi \widehat{V}^{-1} \widehat{V}^{-1} \chi' \left(\chi \widehat{V}^{-1} \chi' \right)^{-1}$$

$$\widehat{MSE}_0^* = \frac{1}{T} \left(\left(\widehat{V}^{-\frac{1}{2}} \chi' \right)' \widehat{V}^{-\frac{1}{2}} \chi' \right)^{-1} = \frac{1}{T} (C' C)^{-1}$$

For a given S and R :

$$\widehat{MSE}_0 = \frac{1}{T} (\chi N \chi')^{-1} \chi N \widehat{V} N \chi' (\chi N \chi')^{-1}$$

$$\widehat{MSE}_0 = \frac{1}{T} (\chi N \chi')^{-1} \chi N \widehat{V}^{\frac{1}{2}} \left((\chi N \chi')^{-1} \chi N \widehat{V}^{\frac{1}{2}} \right)' = \frac{1}{T} B B'$$

Now, $BC = (\chi N \chi')^{-1} \chi N \widehat{V}^{\frac{1}{2}} \widehat{V}^{-\frac{1}{2}} \chi' = I_K$ so that:

$$\widehat{MSE}_0 - \widehat{MSE}_0^* = \frac{1}{T} B B' - \frac{1}{T} (C' C)^{-1} = \frac{1}{T} B \left(I_{K^i} - C (C' C)^{-1} C' \right) B'$$

which is a semi definite positive matrix¹³ meaning that $\widehat{\delta}_0^*$ is optimal. ■

Proposition 2 *(R^*, S^*) minimizes the mean squared error \widehat{MSE}_t for each single t . The optimal estimate is thus efficient for each t .*

Proof. Consider δ_t as a starting point instead of δ_0 in the solution of the minimization program. All details are given in appendix A.3 ■

Proposition 3 *Define the loss L_i on coefficient $i \in [1, K]$ and its expectation R_i which is called the risk by:*

$$L_i(R, S) = \frac{1}{T} \sum_{t=1}^T \left(\delta_{i,t} - \widehat{\delta}_{i,t}(R, S) \right)^2$$

$$R_i(R, S) = E(L_i(R, S)) = E \left(\frac{1}{T} \sum_{t=1}^T \left(\delta_{i,t} - \widehat{\delta}_{i,t}(R, S) \right)^2 \right)$$

then (R^*, S^*) minimizes the risk R_i on coefficient i .

¹³ $C(C' C)^{-1} C'$ is the orthogonal projector on the space generated by the columns of matrix C . Now a vector X has always a greater norm than its projection so $X' X > X' C(C' C)^{-1} C' C(C' C)^{-1} C' X$ so $I_{K^i} - C(C' C)^{-1} C'$ is definite positive.

Proof. \widehat{MSE}_t is minimum for the choice (R^*, S^*) .

As a consequence, $E \left(\left(\delta_{i,t} - \widehat{\delta}_{i,t}(R^*, S^*) \right)^2 \right)$ is minimum, being a diagonal element of the matrix \widehat{MSE}_t , as well as $E \left(\frac{1}{T} \sum_{t=1}^T \left(\delta_{i,t} - \widehat{\delta}_{i,t}(R, S) \right)^2 \right)$ ■

In line with the spline litterature, the estimate minimizes the risk and, in addition, it is efficient for a given t .

The optimal values (19) are the equivalent of the sound to noise ratio used in Hodrick and Prescott (1981). There is an analogy between the choice of (R, S) and the choice of the parameter λ of the HP filter (9). In their seminal work, Hodrick and Prescott justify the choice of λ by the writing of the joint likelihood of the signal and the trend. It is possible to show that the sound to noise ratio has many interesting properties. For instance, Schlicht (2006) proves that it is the unique λ such that $\widehat{y}_t(\lambda) = E(y|x)$. One could prove that it minimizes the mean squared error between the estimated trend and the real one.

The weighting matrix S^* is the same as the one used in the standard GMM when heteroskedasticity matters. Finally, \overline{Q} is diagonal, so is R^* and therefore cross terms are not penalized in (7).

3.4 Comments

First, the problem is equivalent to a minimization program (7) which reminds us of a filter approach such as Hodrick and Prescott (1981). The method belongs to non-parametric statistics and more precisely smoothing splines.

In contrast to Kim and Nelson (2006), the method does not require specifying initial conditions δ_0 . If δ_t were stationnary, then one could set initial conditions to the long term value of the coefficients. Here, δ_t is integrated and a Kalman filter approach requires initial conditions often estimated on a time invariant form of (1) on the beginning of the sample. The initial conditions are not accurate and that error source in the procedure is decreasing but persistent as time goes by. Furthermore, the 40 first observations at least should not be accounted for in the main estimation.

My method is derived from the GMM litterature and is based on moment conditions rather than sum of squares. As in the GMM case the estimate is heteroskedasticity robust. As a contrast, in a Kalman filtering approach, a special form of heteroskedasticity for the residuals has to be imposed. The random walk assumption for δ_t allows for permanent changes. A more general autoregressive form would have led to a mean reverting process.

This method has some drawbacks. First of all, it does account for the heteroskedasticity of v_t but not for its possible autocorrelation when the forecast

horizon is greater than one period. If autocorrelation is significant, the estimate is not optimal any more. Stock and Watson (1998) propose to apply an autoregressive filter to the model (8) so that the error term v_t is not autocorrelated. Then, a part of arbitrary choice remains in the definition of \bar{Q} . Other choices shown in appendix A.4. assess the robustness to this issue: for example, if the relative variances were wrong, the estimated coefficients would adjust around the true coefficients. Then, because of the quadratic penalization of the changes in the coefficients, a smooth transition is favoured rather than one-time breaks. It is possible to penalize the absolute value of the first difference of the coefficients but this solution is analytically intractable. Another issue deals with the deep nature of δ_t and thus the properties of u_t . To implement Stock and Watson's method, it is implicitly assumed that u_t is independent of the other shocks in the economy. This is not likely and there must have been some interactions between the real economy and the way monetary policy was conducted. It is a substantial limitation of the time-varying approach. In the spline framework, this issue matters only for the optimality conditions because this is the only part where distribution hypotheses are made.

4 What does it tell us about the FED monetary policy ?

The method can be implemented to various specifications depending on h and l :

$$i_t = a_{0,t} + a_{\pi,t}E_{t-1}(\pi_{t+h}) + a_{y,t}E_{t-1}(y_{t+l}) + a_{i,t}i_{t-1} + \omega_t$$

which is more easily understandable as (6):

$$i_t = (1 - \rho_t) (\beta_{0,t} + \beta_{\pi,t}E_{t-1}(\pi_{t+h}) + \beta_{y,t}E_{t-1}(y_{t+l})) + \rho_t i_{t-1} + \omega_t$$

I consider two baseline formulations: $h = l = 0$ which corresponds to the situation in which the FED reacts to current values, not available at the time it takes a decision and the case $h = 3$ et $l = 0$ when the central bank reacts to expected inflation a year ahead $\bar{\pi}_{t+3} = \frac{1}{4}(\pi_t + \pi_{t+1} + \pi_{t+2} + \pi_{t+3})$ as well as to the current output gap. Kim and Nelson (2006) corresponds to $h = l = 0$ given the notations, Boivin (2005) to the second case.

4.1 Data

I use data from the FRED database (Federal Reserve Economic Data) available on the FED of S^t Louis website.

The rule I consider depends only on inflation and real activity. It would have been possible to extend the set of explanatory variables to money or commodity price. However, there is no evidence that the central bank looked at such variables. Then, they could enter the instruments Z_t meaning that the FED care about, say commodity price, as part of future inflation.

I use the quarterly difference of the GDP deflator (GDPDEF) annualized as a measure of inflation.

For the output gap, I follow Kim and Nelson (2006) and take the definition of the Congressional Budget Office, which is a semi-structural estimate (GDPC96-GDPOT) very close to the extraction of a quadratic trend as shown in appendix A.4.3.

i_t is set equal to the average Federal Fund Rate in the first month of each quarter (FEDFUNDS).

The set of instruments includes four lags of quarterly inflation, output gap, interest rate, quarterly change of M2 (M2SL), commodity price inflation and the spread between one year and ten years treasury bonds (GS1 and GS10). These variables should bring information on future inflation and the output gap. Four lags are widespread in the literature. For the commodity price, I take the producer price index covering all the commodities (PPIACO in FRED database, or WPU00000000 in the Bureau of Labor Statistics database).

Other definitions are chosen in appendix A.4.3. to check for robustness.

4.2 Break estimates

As a first analysis, one can estimate a constant rule (1) on subperiods. I implement a GMM technique, following Clarida, Gali and Gertler (2000). Here the 2SLS allow to estimate the optimal weighting matrix in order to minimize the asymptotic covariance of the GMM estimate. Then, we compute the 3SLS, heteroskedasticity robust.

I consider the pre-Volcker era 1960Q1 – 1979Q2 and the Volcker-Greenspan era 1979Q3 – 2006Q1. A third period 1987Q3 – 2006Q1 is added for more stable results, following Jondeau, Le Bihan and Gallès (2004). The following tables display the structural form (6) in order to ease the interpretation.

Table 1: GMM on 3 subperiods, h=l=0

	β_0	β_π	β_y	ρ
1960Q2 – 1979Q2	1,51 (0,37)	0,90 (0,09)	0,45 (0,11)	0,72 (0,06)
1979Q3 – 2006Q3	-0,40 (0,63)	2,45 (0,25)	0,97 (0,17)	0,79 (0,03)
1987Q3 – 2006Q3	0,95 (1,17)	1,87 (0,50)	1,45 (0,23)	0,88 (0,02)

Notes: 3SLS

The results are close to Clarida, Gali and Gertler (2000) even if the time periods or the variables are slightly different.

**Table 2: Baseline Estimates
of Clarida, Gali & Gertler (2000)**

	π^*	β_π	β_y	ρ
1960Q1 – 1979Q2	4,24 (1,09)	0,83 (0,07)	0,27 (0,08)	0,68 (0,05)
1979Q3 – 1996Q4	3,58 (0,50)	2,15 (0,40)	0,93 (0,42)	0,79 (0,04)

Notes: Table II from Clarida, Gali and Gertler (2000)

The second specification gives:

**Table 3: GMM on 3 subperiods:
Annual inflation, contemporaneous output gap**

	β_0	β_π	β_y	ρ
1960Q2 – 1979Q2	1,03 (0,41)	0,98 (0,10)	0,46 (0,13)	0,75 (0,05)
1979Q3 – 2005Q4	-0,82 (1,05)	2,58 (0,40)	1,03 (0,18)	0,83 (0,02)
1987Q3 – 2005Q4	-0,43 (1,51)	2,39 (0,65)	1,41 (0,23)	0,89 (0,02)

Notes: 3SLS

One can notice that the rule changed between the two subperiods. Until 1979, monetary policy seemed to accommodate inflation whereas the long term response of the interest rate to inflation is above one under the chairmanship of P.Volcker and A.Greenspan. The rule seems to be more and more countercyclical.

This method suffers from two main drawbacks. First, I assume one single structural break. Second, identification is weak as GMM estimation is carried out on a small time period.

4.3 Main results

4.3.1 Median unbiased estimate

Following Stock and Watson’s approach modified to allow for endogeneity, I can compute the medians of the limiting distributions of L_T ¹⁴:

μ	$h = l = 0$	$h = 3, l = 0$
0	10.9	10.9
1	11.1	11.2
2	11.8	12.0
3	12.7	13.0
4	13.8	14.4
5	15.2	15.9
6	17.0	17.3
7	18.9	19.4
8	20.8	21.5
9	23.3	24.0
10	25.9	26.9

For $h = l = 0$, $L_T = 19.1$ which leads to $\hat{\mu} = 7.1$. For the second specification, $L_T = 18.1$ and $\hat{\mu} = 6.4$.

4.3.2 Results

In the first specification, the FED reacts to expected current inflation and output gap. Figure 1 shows the evolution of the coefficients of the rule (1). Figure 2 focuses on the second specification with medium term concerns. Because of the delay needed for monetary policy to be effective, it is often assumed that decisions are motivated with a medium term perspective. In contrast with Kim and Nelson (2006), the long term response of the interest rate to inflation starts from a value below one, 0.8, in the 60s and reaches a value above one, between 1.4 and 1.8, in the 80s. The transition is quite brutal and occurs when P. Volcker became chairman of the Board. The degree of interest rate smoothing raises from 0.7/0.75 to 0.8/0.85. The response to the output gap raises from 0.6 to 1.1.

Both the evolution of $(\beta_0, \beta_\pi, \beta_y, \rho)$ and (a_0, a_π, a_y, a_i) are plotted because the first set of coefficients describes the long term response of the FED whereas the second one describes the short term dynamics.

The monetary policy shock is not strictly equal to the residual which depends also on forecast errors. Nevertheless, one can distinguish the oil shocks and the appointment of P.Volcker. During these periods, discretion increased.

¹⁴Replacing L_T with the other statistic $\sup_{s \in [s_0, s_1]} \xi_T \left(s, \hat{\delta}_{GMM,T} \right)' S_T \xi_T \left(s, \hat{\delta}_{GMM,T} \right)$ does not change $\hat{\mu}$ very much : in the second baseline $\hat{\mu} = 6.8$ instead of 6.4.

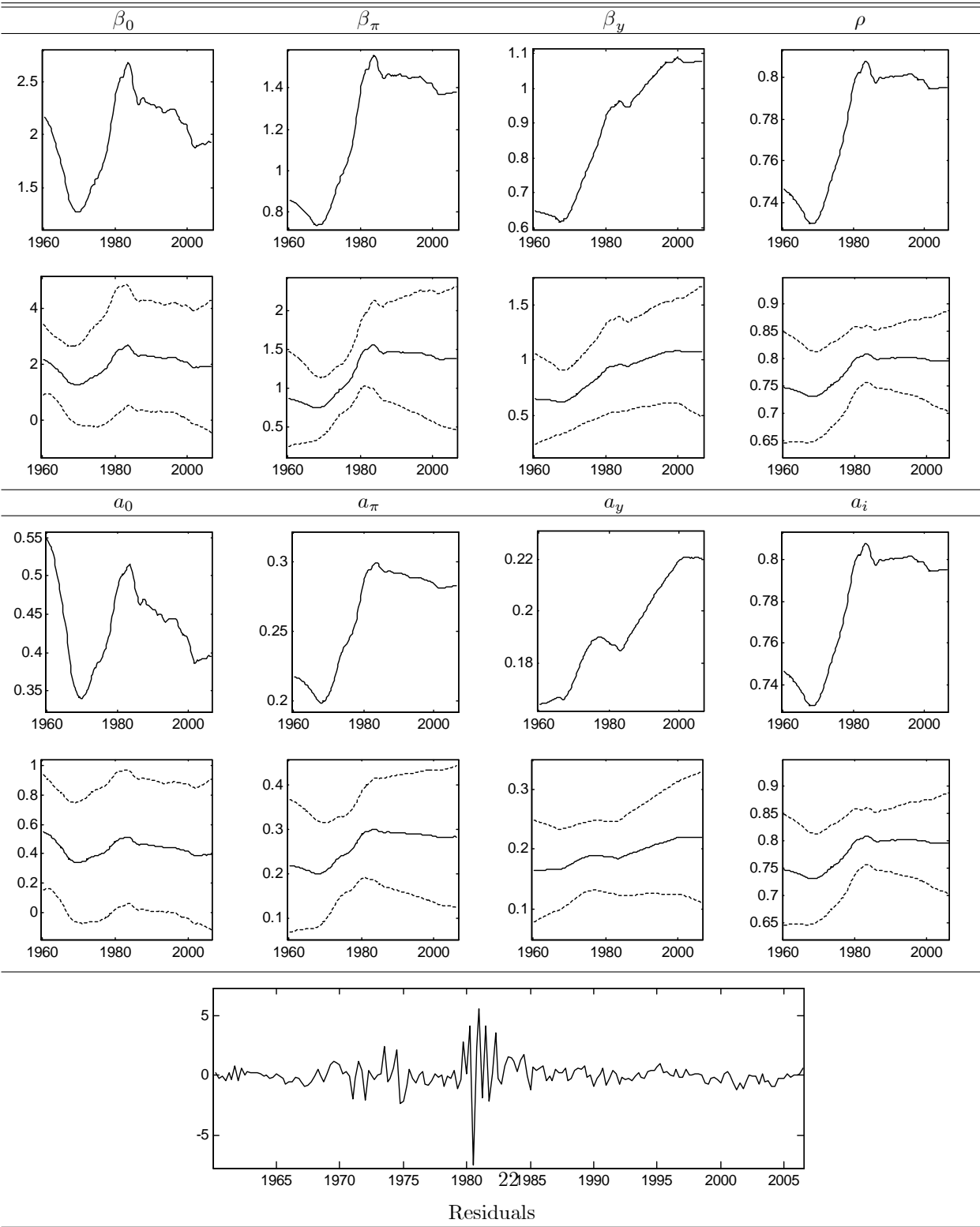


Figure 1: $h = l = 0$

Notes: Optimal matrix S^* and R^* ; confidence interval $\pm\sqrt{MSE}$

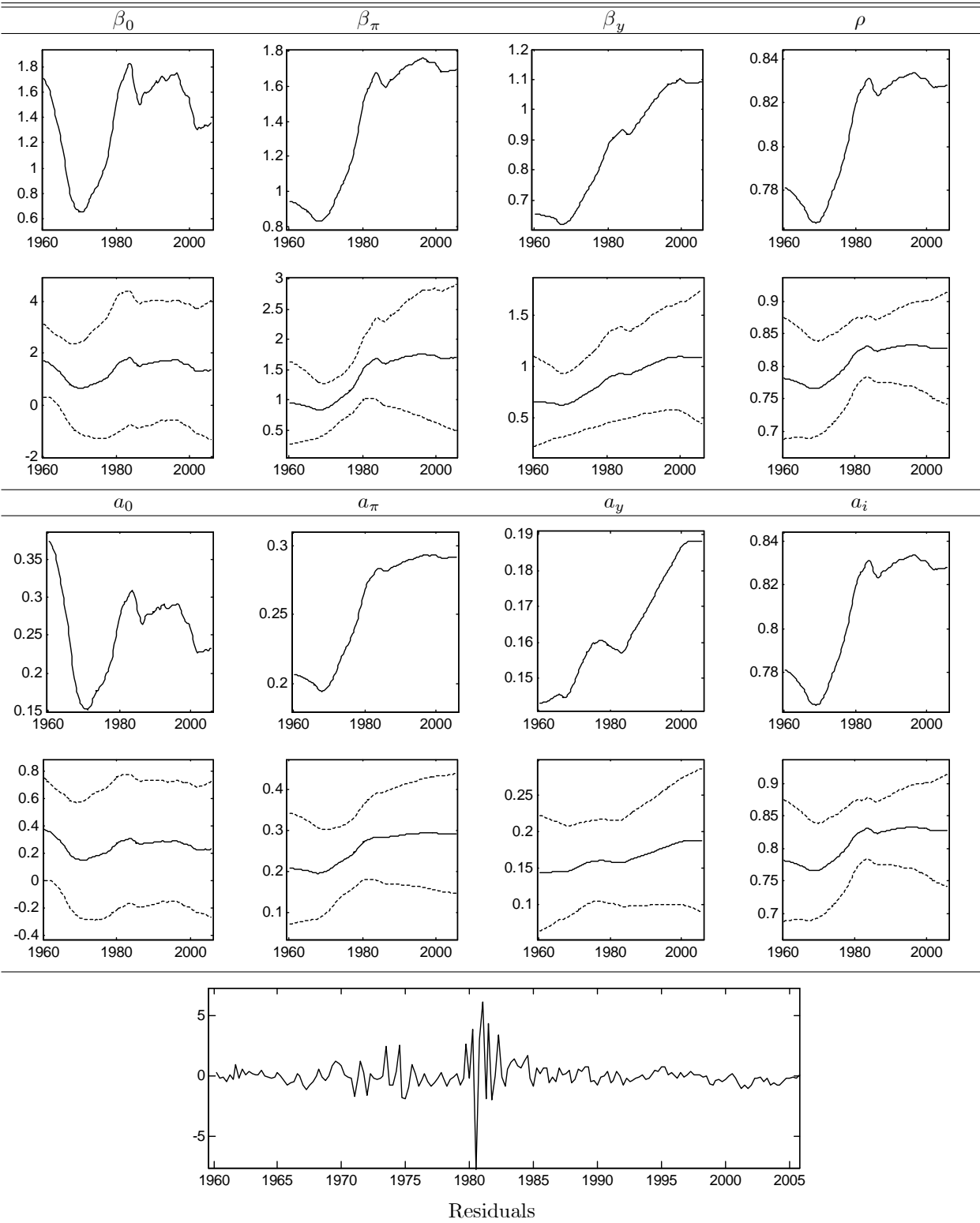


Figure 2: Expected annual inflation, contemporaneous output gap

Notes: Optimal matrix S^* and R^* ; confidence interval $\pm\sqrt{MSE}$

4.3.3 Results analysis

To allow for comparison, Figure 3 superposes my results to those by Kim and Nelson (2006) and Clarida, Gali and Gertler (2000).

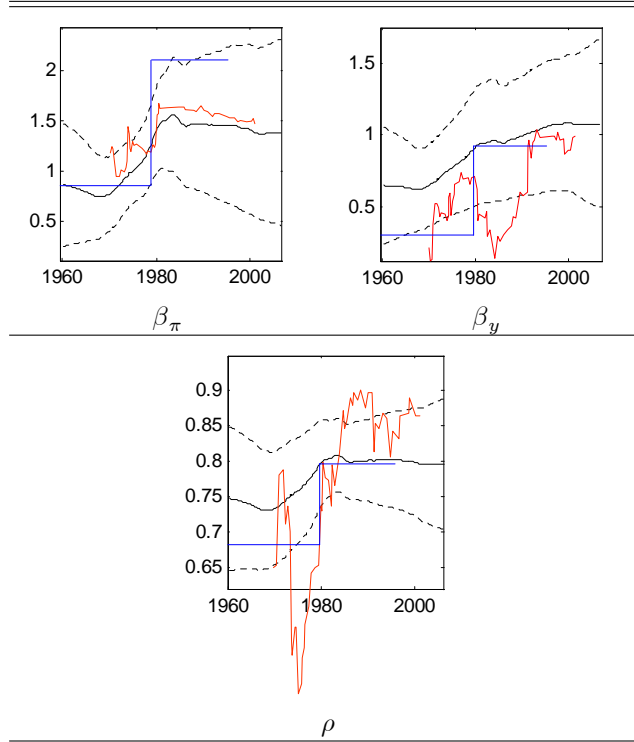


Figure 3: Comparison

Notes: $h = l = 0$ in dark; Kim and Nelson (2006) in red
Clarida, Gali and Gertler (2000) in blue

First, the central bank accommodated inflation during the 60s and the 70s, consistently with Clarida, Gali and Gertler (2000). It is true that the degree of uncertainty around the point estimate of β_π involves that β_π is never statistically different from one should not expect a high precision from a time-varying approach. It can not be ruled out that the poor economic performance in the 70s was due to a weak reaction of the central bank (ie bad policy rather than bad luck). The curve $t \rightarrow \beta_{\pi,t}$ is closer to a stepwise function rather than a continuous one. One could conclude it fully justifies the structural break approach.

The long term response of the interest rate to the output gap continuously increased from a value close to 0.6 in 1960 to 1.1 in 2000. The confidence interval seems to move away from 0 as time increases. These results are different from Kim and Nelson (2006). The central bank became more and more countercyclical while implementing its disinflation policy. This increasing profile of β_y is robust as shown in appendix A.4 but contradicts some previous studies by Orphanides (2004) or Boivin (2006). Their results rather favor a decrease in this response. The main explanation of this huge difference relies on the type of data used, real time or ex-post.

The degree of interest rate smoothing ρ is increasing. Kim and Nelson's results are particular on this issue. They find ρ to be close to 0.5 during the first oil shock, which may be due to an imperfect heteroskedasticity specification in their model.

Romer and Romer (2002) describe the changes in the conduct of monetary policy in the postwar United States. They find that the FED focused more on real activity than on inflation in the 60s and 70s. However, as soon as P.Volcker was appointed chairman of the Board, the FED vigorously struggled against inflationary pressures without giving up growth concerns:

In the 1950s, policy-makers cautiously balanced concerns over inflation and real activity; in the 1960s, they focused vigorously on increasing real activity; in the 1970s, they pursued policies ranging from rapid expansion to full-fledged contraction to grudging tolerance of inflation; in the early 1980s, they followed a policy of aggressive disinflation; and since that time, they have again cautiously balanced the pursuit of real growth with concern about the possibility of inflation. (Romer and Romer, 2002, p 70-71)

To go further in the bad luck v. bad policy debate, it is necessary to know whether and when monetary policy was able to insure the local determinacy of the equilibrium. As Woodford (2003) shows, the answer is often depending on a weighted sum of β_π and β_y .

Proposition 4 *The economy is described by (5), in the case $h = l = 0$. The equilibrium is locally and uniquely determined if and only if:*

$$\beta_{\pi,t} + \frac{1-\beta}{4\kappa}\beta_{y,t} - 1 > 0$$

or, as a function of $a_{0,t}$, $a_{\pi,t}$, $a_{y,t}$ and $a_{i,t}$:

$$a_{\pi,t} + \frac{1-\beta}{4\kappa}a_{y,t} + a_{i,t} - 1 > 0 \tag{20}$$

Proof. See appendix A.5. ■

Let us calibrate $\beta = 0.99$ and $\kappa = 0.024$ according to table 5.1 in Woodford (2003). It is not only possible to check if (20) is true or not but also the uncertainty surrounding this criterion and the probability that (20) is satisfied.

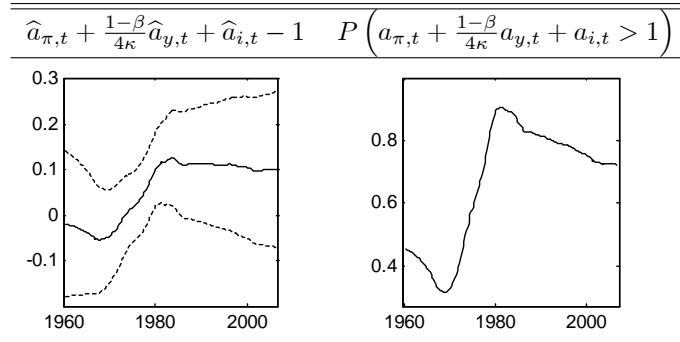


Figure 4: Local determinacy of the equilibrium

Notes: $h = l = 0$

One has to be careful with figure 4. A simple DSGE model has been chosen and β or κ may have changed during the time period. One may argue (5) has micro-foundations so the IS curve or the NKPC did not change but it is only a simplified form¹⁵. Moreover, we derived the criterion in a static way, as if the economic agents did not know the rule was changing. This is not a too strong hypothesis since the coefficients follow a random walk and therefore today values are the best estimates of tomorrow ones. Conditionnal on these hypotheses, it is not likely that the equilibrium was locally determined in the 60ies or in the 70ies.

5 Conclusion

This article deals with the estimation of a forward looking monetary rule with time-varying parameters. This framework faces two econometric issues, endogeneity of the regressors and changing coefficients.

This article is new mainly because of its econometric strategy. I try to answer a key question, here the way monetary policy evolved in the United States, by imposing as few hypotheses as possible. More precisely, I combine the GMM framework to the smoothing splines litterature. Using a non-parametric approach is quite appropriate here. The framework implemented does not impose any restrictions on the form of the heteroskedasticity or the way regressors are

¹⁵ β is a mesure of the subjective discount factor and hence is less likely to have changed than $\kappa = \frac{(1-\theta)(1-\beta\theta)}{\theta} \left(\eta + \frac{1}{\sigma}\right)$ which depends on θ , the probability of no price reoptimization, on σ , the intertemporal elasticity of substitution and on η , the elasticity of labour supply. Ball (2006) favors a decrease of κ on the period that he links to three main reasons : the globalization which exerts a downward pressure on national prices; the central bank credibility which anchors expectations ; a moderate inflation which allows firms to change their price less often and thus increases θ .

correlated to the disturbance term. Progresses are made in three main directions: initial conditions are estimated with all the information; the estimation is carried out in one single step; robustness is checked.

Moreover, the results can be compared to the existing literature. As many other authors, I find an increasing long term response of the interest rate to expected inflation, especially strong during the chairmanship of P.Volcker and A.Greenspan. Concerning the output gap, I find evidence that the central bank became more and more countercyclical, which is a new result. My categorisation is consistent with the time division in Romer and Romer (2002), especially the accommodative pattern before 1980 and the stability of the period 1980-2006.

References

- BALL, L.M. (2006), "Has Globalization Changed Inflation ?", *NBER Working Paper*, W12687.
- BLANCHARD, O.J. & KAHN, C.M. (1980), "The Solution of Linear Difference Models under Rational Expectations", *Econometrica*, 48,1305-1311.
- BOIVIN, J. (2006), "Has U.S. Monetary Policy Changed? Evidence from Drifting Coefficients and Real-Time Data", *Journal of Money, Credit, and Banking*, 38, 1149-1173.
- CLARIDA, C., GALI, J. & GERTLER, M. (2000), "Monetary Policy Rules, and Macroeconomic Stability: Evidence and some Theory", *Quarterly Journal of Economics*, February, 147-180.
- COGLEY, T. & SARGENT, T. (2005), "Drift and Volatilities: Monetary Policy and Output in post WWII US", *Review of Economic Dynamics*, 8, 275-308
- CRAVEN, P. & WAHBA, G. (1978) "Smoothing noisy data with spline functions", *Numerische Mathematik*, 31, 377-403.
- HODRICK, R.J. & PRESCOTT, E.C. (1981), "Postwar U.S. Business Cycles: An Empirical Investigation", *Discussion Papers 451, Northwestern University, Center for Mathematical Studies in Economics and Management Science*.
- JONDEAU, E., LE BIHAN, H., & GALLES, C. (2004), "Assessing Generalized Method of Moments Estimates of the Federal Reserve Reaction Function", *Journal of Business and Economic Statistics*, 22, 225-239.
- KIM, C.J. & NELSON, C.R. (2006), "Estimation of a forward-looking monetary policy rule: A time-varying parameter model using ex post data", *Journal of Monetary Economics*, 53, 1949-1966.
- LEMOINE, M. & PELGRIN, F. (2003), "Introduction aux modèles espace-état et au filtre de Kalman", *Revue de l'OFCE*, 86, 203-229.
- ORPHANIDES, A. (2004), "Monetary Policy Rules, Macroeconomic Stability and Inflation: A View from the Trenches", *Journal of Money, Credit, and Banking*, 36 (2), 151-175.
- PRIMICERI, G.E. (2005), "Time-Varying Structural Vector Autoregressions and Monetary Policy", *Review of Economic Studies*, 72 (3), 821-852.

ROMER, C. & ROMER, D. (2002), "The Evolution of Economic Understanding and Postwar Stabilization Policy" In *Rethinking Stabilization Policy*, Federal Reserve Bank of Kansas City.

SCHLICHT, E. (2006), "Estimating the Smoothing Parameter in the so-called Hodrick-Prescott Filter", *Journal of the Japan Statistical Society*, 35, 99-119.

SIMS, C.A. & ZHA, T. (2006), "Were There Regime Switches in US Monetary Policy", *American Economic Review*, 96 (1), 54-81.

SOWELL, F., (1996), "Optimal Tests for Parameter Instability in the Generalized Method of Moments Framework", *Econometrica*, 64, 1085-1107.

STOCK, J.H. & WATSON, M.W. (1998), "Median Unbiased Estimation of Coefficient Variance in a Time-Varying Parameter Model", *Journal of the American Statistical Association*, 93, 349-358.

TAYLOR, J.B. (1993), "Discretion versus policy rules in practice", *Carnegie-Rochester Conference Series on Public Policy*, 39, 195-294.

WOODFORD, M. (2003), *Interest and prices: Foundations of a theory of monetary policy*, Princeton, NJ: Princeton University Press.

Appendix

A.1 Data

Figure 5 plots the data used in the econometric application.

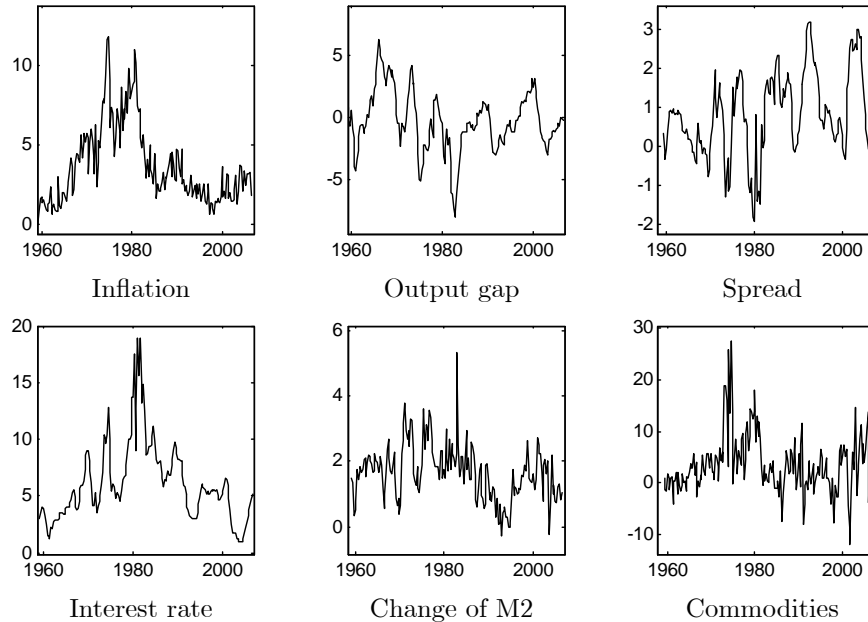


Figure 5: Data

Then I carry out stationarity tests with a sequential approach.

For the interest rate, an augmented Dickey-Fuller test is implemented with a constant in the regressors and a number of lags according to the AIC criterion. Student statistic τ is equal to -3.19 and the critical values at 1%, 5%, 10% are respectively -3.47 , -2.88 et -2.57 . This test rejects the null hypothesis of a unit root at a 5% level (p-value equal to 2.2%). A KPSS stationarity test gives a value of 0.33 whereas critical values at 1%, 5% and 10% are 0.74, 0.46 et 0.35. We do not reject the null hypothesis of stationarity.

For the inflation, an ADF test with a constant is chosen. $\tau = -2.10$ and hence it does not reject the null hypothesis of a unit root at a 5% level (p-value equal to 24%). A KPSS stationarity test gives a value of 0,40. The null hypothesis of stationarity can not be rejected.

A.2 Kim and Nelson's approach

Kim and Nelson (2006) propose a two-step procedure for the estimation of (2), time-varying equivalent of the 2SLS. They instrument (2) with lags of inflation, output gap, interest rate, quarterly change of M2 or the inflation of commodities.

First, they compute the forecast errors. They estimate the following state-space model with a MLE based on the prediction error decomposition:

$$\begin{cases} \pi_{t+h} = Z_t' \delta_t^\pi + v_t^\pi \\ \delta_t^\pi = \delta_{t-1}^\pi + u_t^\pi \end{cases}$$

where v_t^π is assumed to follow a $GARCH(1,1)$ in order to take into account the heteroskedasticity of the forecast error. The Kalman filter is hence slightly modified following Harvey, Ruiz & Sentana (1992). They compute the forecast errors $v_{t|t-1}^\pi = \pi_{t+h} - Z_t' \delta_{t|t-1}^\pi = \pi_{t+h} - E(\pi_{t+h} | Z_t)$ and the normalized forecast errors $v_{t|t-1}^\pi = \frac{\pi_{t+h} - Z_t' \delta_{t|t-1}^\pi}{Z_t' P_{t|t-1}^\pi Z_t + \sigma_{\pi,t}^2}$.

To implement the second step, they model the correlation between v_t and the explanatory variables as:

$$v_t = \sigma_{v,t} \left(\tau' \begin{pmatrix} v_{t|t-1}^\pi \\ v_{t|t-1}^y \end{pmatrix} + \omega_t^* \right)$$

They are then able to estimate (2), following Harvey, Ruiz & Sentana (1992):

$$\begin{cases} x_t = z_t' \delta_t + \sigma_{v,t} \left(\tau' \begin{pmatrix} v_{t|t-1}^\pi \\ v_{t|t-1}^y \end{pmatrix} + \omega_t^* \right) \\ \delta_t = \delta_{t-1} + u_t \\ \sigma_{v,t}^2 = \alpha_0 + \alpha_1 v_{t-1}^2 + \alpha_2 \sigma_{v,t-1}^2 \end{cases}$$

A.3 Optimality criterion

Writing the estimator formula in a different way shows that minimizing MSE_0 is equivalent to minimizing each MSE_{t_0} . To get this result, the stress is put on δ_{t_0} instead of δ_0 in the resolution of (7).

$$\begin{aligned} T^2 R(\delta_t - \delta_{t-1}) &= \sum_{i=t}^T z_i Z_i' S \Psi = - \sum_{i=1}^{t-1} z_i Z_i' S \Psi \\ \Rightarrow T^2 R(\delta_t - \delta_{t_0}) &= \begin{cases} \sum_{j=t_0+1}^t \sum_{i=j}^T z_i Z_i' S \Psi & \text{if } t > t_0 \\ 0 & \text{if } t = t_0 \\ - \sum_{j=t+1}^{t_0} \sum_{i=j}^T z_i Z_i' S \Psi = \sum_{j=t+1}^{t_0} \sum_{i=1}^{j-1} z_i Z_i' S \Psi & \text{if } t < t_0 \end{cases} \\ \Psi &= \frac{1}{T} \sum_{t=1}^T (x_t - z_t' \delta_t) Z_t = \Omega - \chi' \delta_{t_0} - \frac{1}{T^3} \left[\sum_{t=1}^{t_0-1} Z_t z_t' R^{-1} \sum_{j=t+1}^{t_0} \sum_{i=1}^{j-1} z_i Z_i' + \sum_{t=t_0+1}^T Z_t z_t' R^{-1} \sum_{j=t_0+1}^t \sum_{i=j}^T z_i Z_i' \right] S \Psi \end{aligned}$$

$$\Psi = \Omega - \chi' \delta_{t_0} - \frac{1}{T^3} \left[\sum_{j=2}^{t_0} \left(\sum_{t=1}^{j-1} Z_t z_t' \right) R^{-1} \left(\sum_{i=1}^{j-1} z_i Z_i' \right) + \sum_{j=t_0+1}^T \left(\sum_{t=j}^T Z_t z_t' \right) R^{-1} \left(\sum_{i=j}^T z_i Z_i' \right) \right] S \Psi$$

$$\Psi = \Omega - \chi' \delta_{t_0} - \frac{1}{T^3} \left[\sum_{j=1}^{t_0-1} \left(\sum_{t=1}^j Z_t z_t' \right) R^{-1} \left(\sum_{i=1}^j z_i Z_i' \right) + \sum_{j=t_0+1}^T \left(\sum_{t=j}^T Z_t z_t' \right) R^{-1} \left(\sum_{i=j}^T z_i Z_i' \right) \right] S \Psi$$

Define:

$$J(t_0) = I_{K^i} + \frac{1}{T^3} \left[\sum_{j=1}^{t_0-1} \left(\sum_{t=1}^j Z_t z_t' \right) R^{-1} \left(\sum_{i=1}^j z_i Z_i' \right) + \sum_{j=t_0+1}^T \left(\sum_{t=j}^T Z_t z_t' \right) R^{-1} \left(\sum_{i=j}^T z_i Z_i' \right) \right] S$$

Hence:

$$J(t_0) \Psi = \Omega - \chi' \delta_{t_0}$$

Since $\chi S \Psi = 0$:

$$\widehat{\delta}_{t_0} = \left(\chi S J(t_0)^{-1} \chi' \right)^{-1} \chi S J(t_0)^{-1} \Omega$$

The mean squared error is:

$$\widehat{MSE}_{t_0} = \frac{1}{T} \left(\chi S J(t_0)^{-1} \chi' \right)^{-1} \chi S J(t_0)^{-1} \left\{ \widehat{\Sigma} + \frac{1}{T^3} \sum_{j=1}^{t_0-1} \left(\sum_{i=1}^j Z_i z_i' \right) \widehat{\mu}^2 \widehat{Q} \left(\sum_{i=1}^j z_i z_i' \right)' \right. \\ \left. + \frac{1}{T^3} \sum_{j=t_0+1}^T \left(\sum_{i=j}^T Z_i z_i' \right) \widehat{\mu}^2 \widehat{Q} \left(\sum_{i=j}^T z_i z_i' \right)' \right\} \left(\left(\chi S J(t_0)^{-1} \chi' \right)^{-1} \chi S J(t_0)^{-1} \right)'$$

which is minimized for $\left(R^* = \frac{1}{\widehat{\mu}^2} \widehat{Q}^{-1}, S^* = \widehat{\Sigma}^{-1} \right)$. From here, the proof follows the one detailed for $t_0 = 0$.

A.4 Robustness analysis

A.4.1 Choice of \overline{Q}

I focus on the second baseline with inflation one year ahead and contemporaneous output gap. I have to impose an arbitrary value for \overline{Q} following Stock and Watson (1998). When the dimension of the hidden variable is greater than one, it is equivalent to fix the relative variances of the innovations of the coefficients. It is possible to test for robustness with respect to this choice. More precisely, I change one diagonal element of \overline{Q} from a ten factor, which is huge. Figure 6 illustrates the robustness of the results.

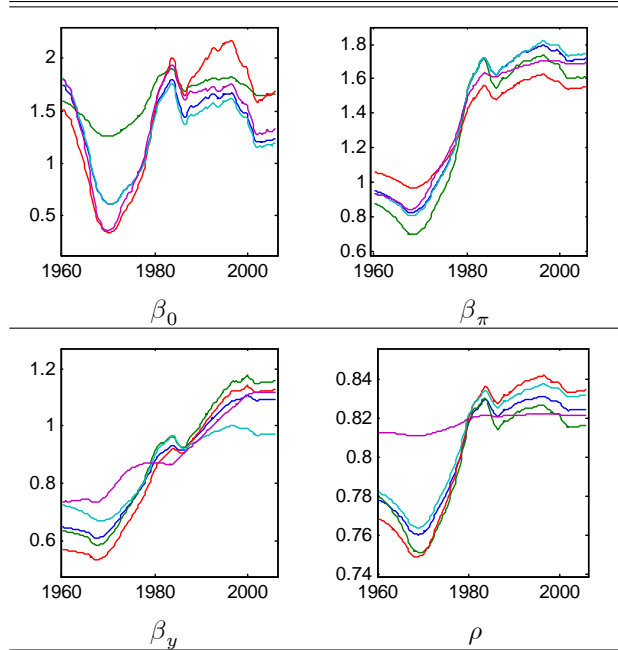


Figure 6 (1): Robustness with respect to \bar{Q}

Notes: in blue $\bar{Q}' = \bar{Q}$; in green $\bar{Q}'_{11} = \bar{Q}_{11}/10$;
in red $\bar{Q}'_{22} = \bar{Q}_{22}/10$; in cyan $\bar{Q}'_{33} = \bar{Q}_{33}/10$;
in purple $\bar{Q}'_{44} = \bar{Q}_{44}/10$

If \bar{Q} is not constrained to be diagonal but simply $\bar{Q} = (M'\Sigma^{-1}M)^{-1}$, one

can notice the robustness, especially on β_y :

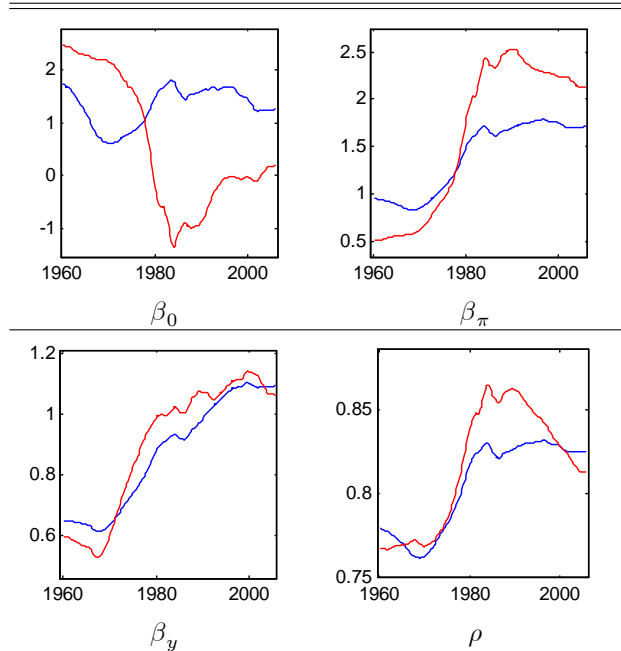


Figure 6 (2): Robustness with respect to \bar{Q}

Notes: in blue \bar{Q} diagonal; in red \bar{Q} non restricted

A.4.2 Uncertainty surrounding μ

Stock & Watson's method makes it possible to build a confidence interval for μ . Let us define $q_\alpha(\mu)$ as the α -quantile of the limiting distribution

$\int_0^1 W(s, \mu, D)' W(s, \mu, D) ds$, then:

$$P(\mu < q_\alpha^{-1}(L_T)) = P(q_\alpha(\mu) < L_T) = 1 - \alpha$$

hence, the confidence interval is:

$$I_{1-2\alpha} = [q_{1-\alpha}^{-1}(L_T), q_\alpha^{-1}(L_T)] = [\underline{\mu}, \bar{\mu}]$$

I take $\alpha = 0,16$, which is one standard error in the gaussian case, and I compute the curves obtained for $\underline{\mu}$ and $\bar{\mu}$. This modification allows to see how the results would have been modified if a mistake was made on μ . Figure 7 stresses the robustness on β_y .

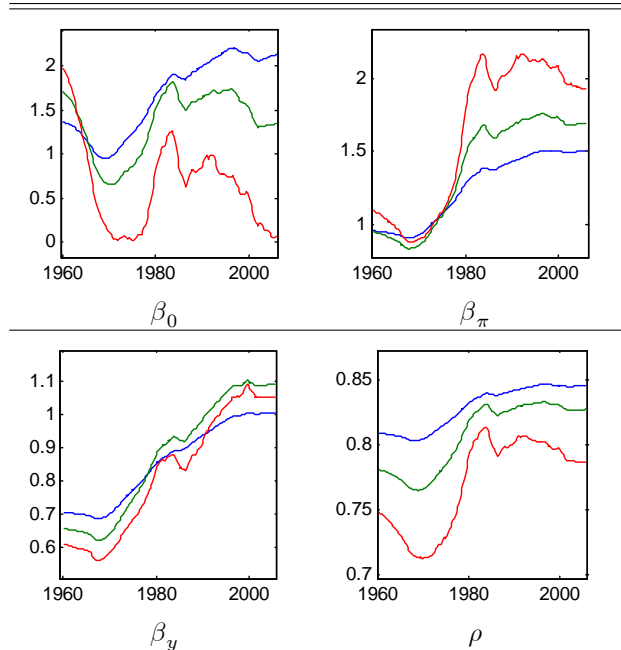


Figure 7: Robustness with respect to μ

Notes: in blue $\underline{\mu}$, in green μ and in red $\bar{\mu}$

A.4.3 Variables definition

In this section, I investigate the robustness to various changes in the data set.

Kim & Nelson (2006) do not include the spread between the short term and the long term bonds, as opposed to Clarida, Gali & Gertler (2000). I chose to include it in the instruments because of its informational content about future inflation.

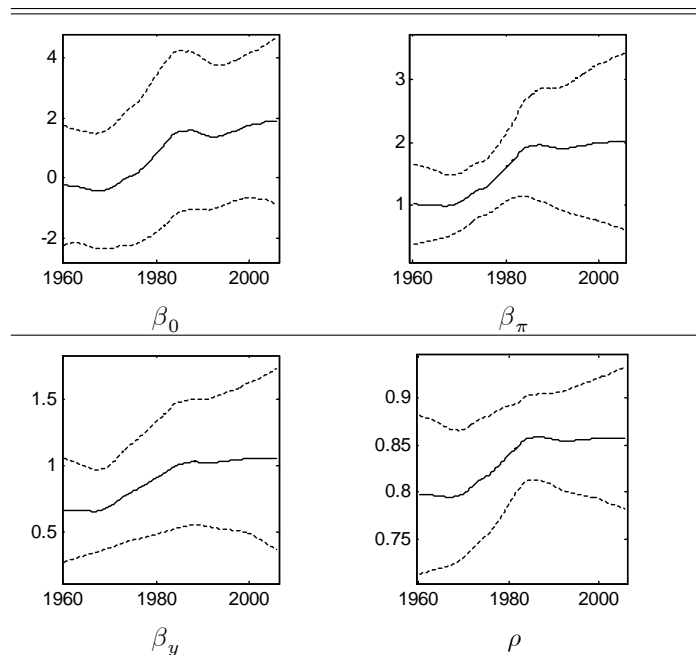


Figure 8: No spread in the instruments

Notes: inflation one year ahead, contemporaneous output gap

One can choose the trend of the GDP to be quadratic. The time series is close to the CBO definition.

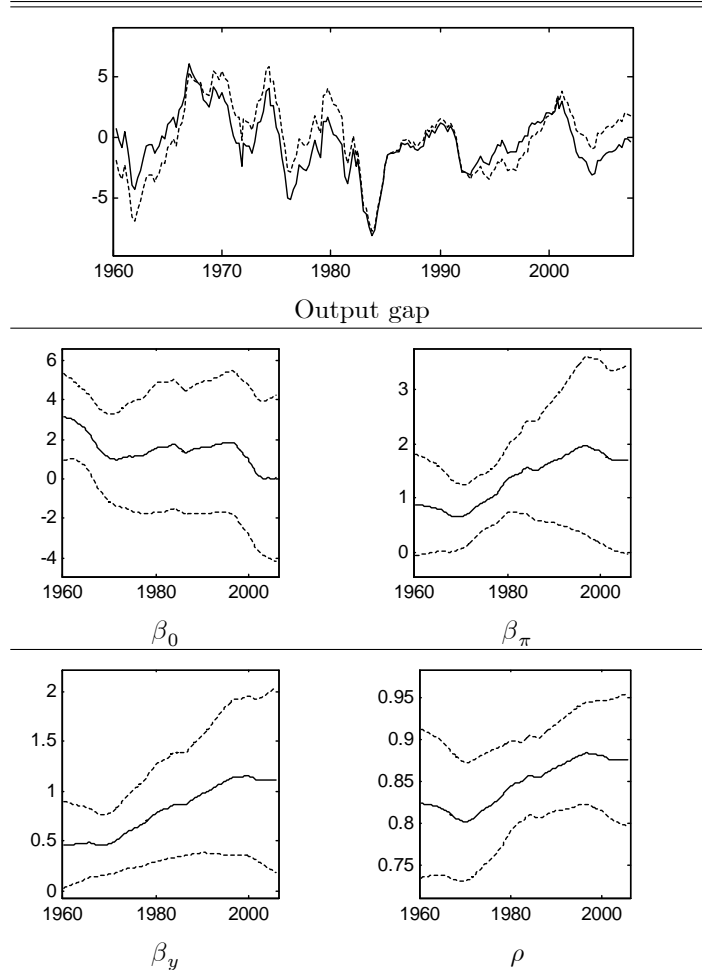


Figure 9: Quadratic trend for GDP

Notes: in the upper part, CBO's definition in full line
quadratic trend in dashes ; inflation one year ahead,
contemporaneous output gap

A.5 Determinacy of the equilibrium

Let us rewrite (5) in the case $h = l = 0$ with the shocks being omitted:

$$\begin{cases} \pi_t = 4\kappa y_t + \beta E_t(\pi_{t+1}) \\ y_t = E_t(y_{t+1}) - \sigma [i_t - E_t(\pi_{t+1})] \\ i_t = a_\pi E_{t-1}(\pi_t) + a_y E_{t-1}(y_t) + a_i i_{t-1} \end{cases}$$

To check whether the equilibrium is locally determined, I follow Woodford (2003), ie check Blanchard & Kahn (1980) conditions. The model is slightly different from those detailed in Woodford (2003), that is why the whole proof is given. Define $P_t = (\pi_t, y_t)'$ the non predetermined variables:

$$\begin{aligned} \begin{pmatrix} 1 & -4\kappa \\ 0 & 1 \end{pmatrix} P_t &= \begin{pmatrix} \beta & 0 \\ \sigma & 1 \end{pmatrix} E_t P_{t+1} - \begin{pmatrix} 0 \\ \sigma \end{pmatrix} i_t \\ E_t P_{t+1} &= \begin{pmatrix} \beta & 0 \\ \sigma & 1 \end{pmatrix}^{-1} \begin{pmatrix} 1 & -4\kappa \\ 0 & 1 \end{pmatrix} P_t + \begin{pmatrix} \beta & 0 \\ \sigma & 1 \end{pmatrix}^{-1} \begin{pmatrix} 0 \\ \sigma \end{pmatrix} i_t \\ E_t P_{t+1} &= \begin{pmatrix} \frac{1}{\beta} & -\frac{4\kappa}{\beta} \\ -\frac{\sigma}{\beta} & 1 + \frac{4\kappa\sigma}{\beta} \end{pmatrix} P_t + \begin{pmatrix} 0 \\ \sigma \end{pmatrix} i_t \end{aligned}$$

Now:

$$i_{t+1} = a_\pi E_t(\pi_{t+1}) + a_y E_t(y_{t+1}) + a_i i_t \Rightarrow (-a_\pi, -a_y, 1) \begin{pmatrix} E_t P_{t+1} \\ i_{t+1} \end{pmatrix} = a_i i_t$$

Hence:

$$\begin{aligned} \begin{pmatrix} 1 & 0 & 0 \\ 0 & 1 & 0 \\ -a_\pi & -a_y & 1 \end{pmatrix} \begin{pmatrix} E_t P_{t+1} \\ i_{t+1} \end{pmatrix} &= \begin{pmatrix} \frac{1}{\beta} & -\frac{4\kappa}{\beta} & 0 \\ -\frac{\sigma}{\beta} & 1 + \frac{4\kappa\sigma}{\beta} & \sigma \\ 0 & 0 & a_i \end{pmatrix} \begin{pmatrix} P_t \\ i_t \end{pmatrix} \\ \begin{pmatrix} E_t P_{t+1} \\ i_{t+1} \end{pmatrix} &= \begin{pmatrix} 1 & 0 & 0 \\ 0 & 1 & 0 \\ a_\pi & a_y & 1 \end{pmatrix} \begin{pmatrix} \frac{1}{\beta} & -\frac{4\kappa}{\beta} & 0 \\ -\frac{\sigma}{\beta} & 1 + \frac{4\kappa\sigma}{\beta} & \sigma \\ 0 & 0 & a_i \end{pmatrix} \begin{pmatrix} P_t \\ i_t \end{pmatrix} \\ \begin{pmatrix} E_t P_{t+1} \\ i_{t+1} \end{pmatrix} &= \begin{pmatrix} \frac{1}{\beta} & -\frac{4\kappa}{\beta} & 0 \\ -\frac{\sigma}{\beta} & 1 + \frac{4\kappa\sigma}{\beta} & \sigma \\ \frac{a_\pi - \sigma a_y}{\beta} & \left(1 + \frac{4\kappa\sigma}{\beta}\right) a_y - \frac{4\kappa}{\beta} a_\pi & a_i + \sigma a_y \end{pmatrix} \begin{pmatrix} P_t \\ i_t \end{pmatrix} \\ \begin{pmatrix} E_t P_{t+1} \\ i_{t+1} \end{pmatrix} &= A \begin{pmatrix} P_t \\ i_t \end{pmatrix} \end{aligned}$$

I only consider parameters sets such that $a_y > 0$. The equilibrium is uniquely and locally determined if and only if A has one root inside the unit circle and two outside. I compute the characteristic polynomial of matrix A :

$$-P_A(X) = X^3 + A_2 X^2 + A_1 X + A_0$$

with $A_2 = -1 - \frac{1}{\beta} - a_i - \frac{4\kappa\sigma}{\beta} - \sigma a_y < 0$, $A_1 = \frac{4\kappa\sigma}{\beta} a_\pi + \frac{\sigma}{\beta} a_y + \frac{4\kappa\sigma}{\beta} a_i + a_i + \frac{a_i}{\beta} + \frac{1}{\beta} > 0$ and $A_0 = -\frac{a_i}{\beta} < 0$. I look for values of the parameters such that one of the three cases of proposition C.2 in Woodford (2003) is verified:

- I $1 + A_2 + A_1 + A_0 < 0$ and $-1 + A_2 - A_1 + A_0 > 0$
- II $1 + A_2 + A_1 + A_0 > 0$ and $-1 + A_2 - A_1 + A_0 < 0$ and $A_0^2 - A_0 A_2 + A_1 - 1 > 0$
- III $1 + A_2 + A_1 + A_0 > 0$ and $-1 + A_2 - A_1 + A_0 < 0$ and $A_0^2 - A_0 A_2 + A_1 - 1 < 0$ and $|A_2| > 3$

Given the signs of A_0 , A_1 and A_2 , $-1 + A_2 - A_1 + A_0 < 0$, case I is excluded. Then, for case II or III to be verified, I must have:

$$1 + A_2 + A_1 + A_0 > 0 \Leftrightarrow a_\pi + \frac{1-\beta}{4\kappa} a_y + a_i - 1 > 0 \quad (21)$$

Let us show that if (21) is verified then either case II or III is, which would achieve the proof.

$$A_0^2 - A_0 A_2 + A_1 - 1 = -\frac{4\kappa\sigma}{\beta^2} (1-\beta) a_i + \frac{\sigma}{\beta} (1-a_i) a_y + \frac{4\kappa\sigma}{\beta} a_\pi + \frac{1}{\beta^2} (\beta - a_i) (1-a_i) (1-\beta)$$

If (21) is true:

$$A_0^2 - A_0 A_2 + A_1 - 1 > -\frac{4\kappa\sigma}{\beta^2} (1-\beta) a_i + \frac{\sigma}{\beta} (1-a_i) a_y + \frac{1}{\beta^2} (\beta - a_i) (1-a_i) (1-\beta) + \frac{4\kappa\sigma}{\beta} \left(1 - a_i - \frac{1-\beta}{4\kappa} a_y\right)$$

$$A_0^2 - A_0 A_2 + A_1 - 1 > -\frac{4\kappa\sigma}{\beta^2} (1-\beta) a_i + \frac{4\kappa\sigma}{\beta^2} \beta (1-a_i) + \frac{\sigma}{\beta} (1-a_i) a_y - \frac{\sigma}{\beta} (1-\beta) a_y + \frac{1}{\beta^2} (\beta - a_i) (1-a_i) (1-\beta)$$

$$A_0^2 - A_0 A_2 + A_1 - 1 > \frac{4\kappa\sigma}{\beta^2} (\beta - a_i) + \frac{\sigma}{\beta} (\beta - a_i) a_y + \frac{1}{\beta^2} (\beta - a_i) (1-a_i) (1-\beta)$$

$$A_0^2 - A_0 A_2 + A_1 - 1 > (\beta - a_i) \left[\frac{4\kappa\sigma}{\beta^2} + \frac{\sigma}{\beta} a_y + \frac{1}{\beta^2} (1-a_i) (1-\beta) \right]$$

If $\beta > a_i$, $A_0^2 - A_0 A_2 + A_1 - 1 > 0$ and case II is verified.

If $a_i > \beta$, $\frac{1}{\beta} + a_i + \frac{4\kappa\sigma}{\beta} + \sigma a_y > \frac{1}{\beta} + \beta > 2$ because $x \rightarrow x + \frac{1}{x}$ is decreasing on $[0, 1]$. Hence $|A_2| = 1 + \frac{1}{\beta} + a_i + \frac{4\kappa\sigma}{\beta} + \sigma a_y > 3$, and therefore either case II, or case III is verified.

Finally, the equilibrium is locally determined if and only if:

$$a_\pi + \frac{1-\beta}{4\kappa} a_y + a_i - 1 > 0 \Leftrightarrow \beta_\pi + \frac{1-\beta}{4\kappa} \beta_y > 1$$

Notes d'Études et de Recherche

1. C. Huang and H. Pagès, "Optimal Consumption and Portfolio Policies with an Infinite Horizon: Existence and Convergence," May 1990.
2. C. Bordes, « Variabilité de la vitesse et volatilité de la croissance monétaire : le cas français », février 1989.
3. C. Bordes, M. Driscoll and A. Sauviat, "Interpreting the Money-Output Correlation: Money-Real or Real-Real?," May 1989.
4. C. Bordes, D. Goyeau et A. Sauviat, « Taux d'intérêt, marge et rentabilité bancaires : le cas des pays de l'OCDE », mai 1989.
5. B. Bensaïd, S. Federbusch et R. Gary-Bobo, « Sur quelques propriétés stratégiques de l'intéressement des salariés dans l'industrie », juin 1989.
6. O. De Bandt, « L'identification des chocs monétaires et financiers en France : une étude empirique », juin 1990.
7. M. Boutillier et S. Dérangère, « Le taux de crédit accordé aux entreprises françaises : coûts opératoires des banques et prime de risque de défaut », juin 1990.
8. M. Boutillier and B. Cabrillac, "Foreign Exchange Markets: Efficiency and Hierarchy," October 1990.
9. O. De Bandt et P. Jacquinot, « Les choix de financement des entreprises en France : une modélisation économétrique », octobre 1990 (English version also available on request).
10. B. Bensaïd and R. Gary-Bobo, "On Renegotiation of Profit-Sharing Contracts in Industry," July 1989 (English version of NER n° 5).
11. P. G. Garella and Y. Richelle, "Cartel Formation and the Selection of Firms," December 1990.
12. H. Pagès and H. He, "Consumption and Portfolio Decisions with Labor Income and Borrowing Constraints," August 1990.
13. P. Sicsic, « Le franc Poincaré a-t-il été délibérément sous-évalué ? », octobre 1991.
14. B. Bensaïd and R. Gary-Bobo, "On the Commitment Value of Contracts under Renegotiation Constraints," January 1990 revised November 1990.
15. B. Bensaïd, J.-P. Lesne, H. Pagès and J. Scheinkman, "Derivative Asset Pricing with Transaction Costs," May 1991 revised November 1991.
16. C. Monticelli and M.-O. Strauss-Kahn, "European Integration and the Demand for Broad Money," December 1991.
17. J. Henry and M. Phelipot, "The High and Low-Risk Asset Demand of French Households: A Multivariate Analysis," November 1991 revised June 1992.
18. B. Bensaïd and P. Garella, "Financing Takeovers under Asymmetric Information," September 1992.

19. A. de Palma and M. Uctum, "Financial Intermediation under Financial Integration and Deregulation," September 1992.
20. A. de Palma, L. Leruth and P. Régibeau, "Partial Compatibility with Network Externalities and Double Purchase," August 1992.
21. A. Frachot, D. Janci and V. Lacoste, "Factor Analysis of the Term Structure: a Probabilistic Approach," November 1992.
22. P. Sicsic et B. Villeneuve, « L'afflux d'or en France de 1928 à 1934 », janvier 1993.
23. M. Jeanblanc-Picqué and R. Avesani, "Impulse Control Method and Exchange Rate," September 1993.
24. A. Frachot and J.-P. Lesne, "Expectations Hypothesis and Stochastic Volatilities," July 1993 revised September 1993.
25. B. Bensaid and A. de Palma, "Spatial Multiproduct Oligopoly," February 1993 revised October 1994.
26. A. de Palma and R. Gary-Bobo, "Credit Contraction in a Model of the Banking Industry," October 1994.
27. P. Jacquinet et F. Mihoubi, « Dynamique et hétérogénéité de l'emploi en déséquilibre », septembre 1995.
28. G. Salmat, « Le retournement conjoncturel de 1992 et 1993 en France : une modélisation VAR », octobre 1994.
29. J. Henry and J. Weidmann, "Asymmetry in the EMS Revisited: Evidence from the Causality Analysis of Daily Eurorates," February 1994 revised October 1994.
30. O. De Bandt, "Competition Among Financial Intermediaries and the Risk of Contagious Failures," September 1994 revised January 1995.
31. B. Bensaid et A. de Palma, « Politique monétaire et concurrence bancaire », janvier 1994 révisé en septembre 1995.
32. F. Rosenwald, « Coût du crédit et montant des prêts : une interprétation en terme de canal large du crédit », septembre 1995.
33. G. Cette et S. Mahfouz, « Le partage primaire du revenu : constat descriptif sur longue période », décembre 1995.
34. H. Pagès, "Is there a Premium for Currencies Correlated with Volatility? Some Evidence from Risk Reversals," January 1996.
35. E. Jondeau and R. Ricart, "The Expectations Theory: Tests on French, German and American Euro-rates," June 1996.
36. B. Bensaid et O. De Bandt, « Les stratégies "stop-loss" : théorie et application au Contrat Notionnel du Matif », juin 1996.
37. C. Martin et F. Rosenwald, « Le marché des certificats de dépôts. Écarts de taux à l'émission : l'influence de la relation émetteurs-souscripteurs initiaux », avril 1996.

38. Banque de France - CEPREMAP - Direction de la Prévision - Erasme - INSEE - OFCE, « Structures et propriétés de cinq modèles macroéconomiques français », juin 1996.
39. F. Rosenwald, « L'influence des montants émis sur le taux des certificats de dépôts », octobre 1996.
40. L. Baumel, « Les crédits mis en place par les banques AFB de 1978 à 1992 : une évaluation des montants et des durées initiales », novembre 1996.
41. G. Cette et E. Kremp, « Le passage à une assiette valeur ajoutée pour les cotisations sociales : Une caractérisation des entreprises non financières “gagnantes” et “perdantes” », novembre 1996.
42. S. Avouyi-Dovi, E. Jondeau et C. Lai Tong, « Effets “volume”, volatilité et transmissions internationales sur les marchés boursiers dans le G5 », avril 1997.
43. E. Jondeau et R. Ricart, « Le contenu en information de la pente des taux : Application au cas des titres publics français », juin 1997.
44. B. Bensaid et M. Boutillier, « Le contrat notionnel : efficience et efficacité », juillet 1997.
45. E. Jondeau et R. Ricart, « La théorie des anticipations de la structure par terme : test à partir des titres publics français », septembre 1997.
46. E. Jondeau, « Représentation VAR et test de la théorie des anticipations de la structure par terme », septembre 1997.
47. E. Jondeau et M. Rockinger, « Estimation et interprétation des densités neutres au risque : Une comparaison de méthodes », octobre 1997.
48. L. Baumel et P. Sevestre, « La relation entre le taux de crédits et le coût des ressources bancaires. Modélisation et estimation sur données individuelles de banques », octobre 1997.
49. P. Sevestre, “On the Use of Banks Balance Sheet Data in Loan Market Studies : A Note,” October 1997.
50. P.-C. Hautcoeur and P. Sicsic, “Threat of a Capital Levy, Expected Devaluation and Interest Rates in France during the Interwar Period,” January 1998.
51. P. Jacquinot, « L'inflation sous-jacente à partir d'une approche structurelle des VAR : une application à la France, à l'Allemagne et au Royaume-Uni », janvier 1998.
52. C. Bruneau et O. De Bandt, « La modélisation VAR structurel : application à la politique monétaire en France », janvier 1998.
53. C. Bruneau and E. Jondeau, “Long-Run Causality, with an Application to International Links between Long-Term Interest Rates,” June 1998.
54. S. Coutant, E. Jondeau and M. Rockinger, “Reading Interest Rate and Bond Futures Options' Smiles: How PIBOR and Notional Operators Appreciated the 1997 French Snap Election,” June 1998.
55. E. Jondeau et F. Sédillot, « La prévision des taux longs français et allemands à partir d'un modèle à anticipations rationnelles », juin 1998.

56. E. Jondeau and M. Rockinger, "Estimating Gram-Charlier Expansions with Positivity Constraints," January 1999.
57. S. Avouyi-Dovi and E. Jondeau, "Interest Rate Transmission and Volatility Transmission along the Yield Curve," January 1999.
58. S. Avouyi-Dovi et E. Jondeau, « La modélisation de la volatilité des bourses asiatiques », janvier 1999.
59. E. Jondeau, « La mesure du ratio rendement-risque à partir du marché des euro-devises », janvier 1999.
60. C. Bruneau and O. De Bandt, "Fiscal Policy in the Transition to Monetary Union: A Structural VAR Model," January 1999.
61. E. Jondeau and R. Ricart, "The Information Content of the French and German Government Bond Yield Curves: Why Such Differences?," February 1999.
62. J.-B. Chatelain et P. Sevestre, « Coûts et bénéfices du passage d'une faible inflation à la stabilité des prix », février 1999.
63. D. Irac et P. Jacquinot, « L'investissement en France depuis le début des années 1980 », avril 1999.
64. F. Mihoubi, « Le partage de la valeur ajoutée en France et en Allemagne », mars 1999.
65. S. Avouyi-Dovi and E. Jondeau, "Modelling the French Swap Spread," April 1999.
66. E. Jondeau and M. Rockinger, "The Tail Behavior of Stock Returns: Emerging Versus Mature Markets," June 1999.
67. F. Sédillot, « La pente des taux contient-elle de l'information sur l'activité économique future ? », juin 1999.
68. E. Jondeau, H. Le Bihan et F. Sédillot, « Modélisation et prévision des indices de prix sectoriels », septembre 1999.
69. H. Le Bihan and F. Sédillot, "Implementing and Interpreting Indicators of Core Inflation: The French Case," September 1999.
70. R. Lacroix, "Testing for Zeros in the Spectrum of an Univariate Stationary Process: Part I," December 1999.
71. R. Lacroix, "Testing for Zeros in the Spectrum of an Univariate Stationary Process: Part II," December 1999.
72. R. Lacroix, "Testing the Null Hypothesis of Stationarity in Fractionally Integrated Models," December 1999.
73. F. Chesnay and E. Jondeau, "Does correlation between stock returns really increase during turbulent period?," April 2000.
74. O. Burkart and V. Coudert, "Leading Indicators of Currency Crises in Emerging Economies," May 2000.

75. D. Irac, "Estimation of a Time Varying NAIRU for France," July 2000.
76. E. Jondeau and H. Le Bihan, "Evaluating Monetary Policy Rules in Estimated Forward-Looking Models: A Comparison of US and German Monetary Policies," October 2000.
77. E. Jondeau and M. Rockinger, "Conditional Volatility, Skewness, and Kurtosis: Existence and Persistence," November 2000.
78. P. Jacquinot et F. Mihoubi, « Modèle à Anticipations Rationnelles de la CONjoncture Simulée : MARCOS », novembre 2000.
79. M. Rockinger and E. Jondeau, "Entropy Densities: With an Application to Autoregressive Conditional Skewness and Kurtosis," January 2001.
80. B. Amable and J.-B. Chatelain, "Can Financial Infrastructures Foster Economic Development?," January 2001.
81. J.-B. Chatelain and J.-C. Teurlai, "Pitfalls in Investment Euler Equations," January 2001.
82. M. Rockinger and E. Jondeau, "Conditional Dependency of Financial Series: An Application of Copulas," February 2001.
83. C. Florens, E. Jondeau and H. Le Bihan, "Assessing GMM Estimates of the Federal Reserve Reaction Function," March 2001.
84. J.-B. Chatelain, "Mark-up and Capital Structure of the Firm facing Uncertainty," June 2001.
85. B. Amable, J.-B. Chatelain and O. De Bandt, "Optimal Capacity in the Banking Sector and Economic Growth," June 2001.
86. E. Jondeau and H. Le Bihan, "Testing for a Forward-Looking Phillips Curve. Additional Evidence from European and US Data," December 2001.
87. G. Clette, J. Mairesse et Y. Kocoglu, « Croissance économique et diffusion des TIC : le cas de la France sur longue période (1980-2000) », décembre 2001.
88. D. Irac and F. Sédillot, "Short Run Assessment of French Economic Activity Using OPTIM," January 2002.
89. M. Baghli, C. Bouthevillain, O. de Bandt, H. Fraisse, H. Le Bihan et Ph. Rousseaux, « PIB potentiel et écart de PIB : quelques évaluations pour la France », juillet 2002.
90. E. Jondeau and M. Rockinger, "Asset Allocation in Transition Economies," October 2002.
91. H. Pagès and J.A.C. Santos, "Optimal Supervisory Policies and Depositor-Preferences Laws," October 2002.
92. C. Loupias, F. Savignac and P. Sevestre, "Is There a Bank Lending Channel in France? Evidence from Bank Panel Data," November 2002.
93. M. Ehrmann, L. Gambacorta, J. Martínez-Pagés, P. Sevestre and A. Worms, "Financial Systems and The Role in Monetary Policy Transmission in the Euro Area," November 2002.
94. S. Avouyi-Dovi, D. Guégan et S. Ladoucette, « Une mesure de la persistance dans les indices boursiers », décembre 2002.

95. S. Avouyi-Dovi, D. Guégan et S. Ladoucette, "What is the Best Approach to Measure the Interdependence between Different Markets? ," December 2002.
96. J.-B. Chatelain and A. Tiomo, "Investment, the Cost of Capital and Monetary Policy in the Nineties in France: A Panel Data Investigation," December 2002.
97. J.-B. Chatelain, A. Generale, I. Hernando, U. von Kalckreuth and P. Vermeulen, "Firm Investment and Monetary Policy Transmission in the Euro Area," December 2002.
98. J.-S. Mésonnier, « Banque centrale, taux de l'escompte et politique monétaire chez Henry Thornton (1760-1815) », décembre 2002.
99. M. Baghli, G. Cette et A. Sylvain, « Les déterminants du taux de marge en France et quelques autres grands pays industrialisés : Analyse empirique sur la période 1970-2000 », janvier 2003.
100. G. Cette and Ch. Pfister, "The Challenges of the "New Economy" for Monetary Policy," January 2003.
101. C. Bruneau, O. De Bandt, A. Flageollet and E. Michaux, "Forecasting Inflation using Economic Indicators: the Case of France," May 2003.
102. C. Bruneau, O. De Bandt and A. Flageollet, "Forecasting Inflation in the Euro Area," May 2003.
103. E. Jondeau and H. Le Bihan, "ML vs GMM Estimates of Hybrid Macroeconomic Models (With an Application to the "New Phillips Curve")," September 2003.
104. J. Matheron and T.-P. Maury, "Evaluating the Fit of Sticky Price Models," January 2004.
105. S. Moyen and J.-G. Sahuc, "Incorporating Labour Market Frictions into an Optimising-Based Monetary Policy Model," January 2004.
106. M. Baghli, V. Brunhes-Lesage, O. De Bandt, H. Fraise et J.-P. Villetelle, « MASCOTTE : Modèle d'Analyse et de préviSion de la COnjoncture TrimesTrielle », février 2004.
107. E. Jondeau and M. Rockinger, "The Bank Bias: Segmentation of French Fund Families," February 2004.
108. E. Jondeau and M. Rockinger, "Optimal Portfolio Allocation Under Higher Moments," February 2004.
109. C. Bordes et L. Clerc, « Stabilité des prix et stratégie de politique monétaire unique », mars 2004.
110. N. Belorgey, R. Lecat et T.-P. Maury, « Déterminants de la productivité par employé : une évaluation empirique en données de panel », avril 2004.
111. T.-P. Maury and B. Pluyaud, "The Breaks in per Capita Productivity Trends in a Number of Industrial Countries," April 2004.
112. G. Cette, J. Mairesse and Y. Kocoglu, "ICT Diffusion and Potential Output Growth," April 2004.

113. L. Baudry, H. Le Bihan, P. Sevestre and S. Tarrieu, "Price Rigidity. Evidence from the French CPI Micro-Data," September 2004.
114. C. Bruneau, O. De Bandt and A. Flageollet, "Inflation and the Markup in the Euro Area," September 2004.
115. J.-S. Mésonnier and J.-P. Renne, "A Time-Varying "Natural" Rate of Interest for the Euro Area," September 2004.
116. G. Cette, J. Lopez and P.-S. Noual, "Investment in Information and Communication Technologies: an Empirical Analysis," October 2004.
117. J.-S. Mésonnier et J.-P. Renne, « Règle de Taylor et politique monétaire dans la zone euro », octobre 2004.
118. J.-G. Sahuc, "Partial Indexation, Trend Inflation, and the Hybrid Phillips Curve," December 2004.
119. C. Loupias et B. Wigniolle, « Régime de retraite et chute de la natalité : évolution des mœurs ou arbitrage micro-économique ? », décembre 2004.
120. C. Loupias and R. Ricart, "Price Setting in France: new Evidence from Survey Data," December 2004.
121. S. Avouyi-Dovi and J. Matheron, "Interactions between Business Cycles, Stock Markets Cycles and Interest Rates: the Stylised Facts," January 2005.
122. L. Bilke, "Break in the Mean and Persistence of Inflation: a Sectoral Analysis of French CPI," January 2005.
123. S. Avouyi-Dovi and J. Matheron, "Technology Shocks and Monetary Policy in an Estimated Sticky Price Model of the US Economy," April 2005.
124. M. Dupaigne, P. Fève and J. Matheron, "Technology Shock and Employment: Do We Really Need DSGE Models with a Fall in Hours?," June 2005.
125. P. Fève and J. Matheron, "Can the Kydland-Prescott Model Pass the Cogley-Nason Test?," June 2005.
126. S. Avouyi-Dovi and J. Matheron, "Technology Shocks and Monetary Policy in an Estimated Sticky Price Model of the Euro Area," June 2005.
127. O. Loisel, "Central Bank Reputation in a Forward-Looking Model," June 2005.
128. B. Bellone, E. Gautier et S. Le Coent, « Les marchés financiers anticipent-ils les retournements conjoncturels ? », juillet 2005.
129. P. Fève, « La modélisation macro-économétrique dynamique », juillet 2005.
130. G. Cette, N. Dromel and D. Méda, "Opportunity Costs of Having a Child, Financial Constraints and Fertility," August 2005.
131. S. Goutron et D. Szpiro, « Excès de liquidité monétaire et prix des actifs », septembre 2005.

132. J. Baude, « L'impact des chocs boursiers sur le crédit en France depuis le milieu des années quatre-vingt-dix », septembre 2005.
133. R. Boulès and G. Cette, "A Comparison of Structural Productivity Levels in the Major Industrialised Countries," October 2005.
134. T. Grunspan, "The Fed and the Question of Financial Stability: An Empirical Investigation," October 2005.
135. S. Fabiani, M. Druant, I. Hernando, C. Kwapil, B. Landau, C. Loupias, F. Martins, T. Mathä, R. Sabbatini, H. Stahl and A. Stockman, "The Pricing Behaviour of Firms in the Euro Area: New Survey Evidence," November 2005.
136. E. Dhyne, L. Alvarez, H. Le Bihan, G. Veronese, D. Dias, J. Hoffmann, N. Jonker, P. Lünemann, F. Rumler and J. Vilmunen, "Price Setting in the Euro Area: Some Stylized Facts from Individual Consumer Price Data," November 2005.
137. D. Fougère, H. Le Bihan and P. Sevestre, "Heterogeneity in Consumer Price Stickiness: A Microeconomic Investigation," November 2005.
138. L. Alvarez, E. Dhyne, M. Hoeberichts, C. Kwapil, H. Le Bihan, P. Lünemann, F. Martins, R. Sabbatini, H. Stahl, P. Vermeulen and J. Vilmunen, "Sticky Prices in the Euro Area: a Summary of New Micro Evidence," November 2005.
139. E. Kharroubi, "Illiquidity, Financial Development and the Growth-Volatility Relationship," February 2006.
140. M. Baghli, C. Cahn and H. Fraise, "Is the Inflation-Output Nexus Asymmetric in the Euro Area," April 2006.
141. E. Jondeau and J-G. Sahuc, "Optimal Monetary Policy in an Estimated DSGE Model of the Euro Area with Cross-country Heterogeneity," April 2006.
142. S. Avouyi-Dovi, M. Brun, A. Dreyfus, F. Drumetz, V. Oung et J.-G. Sahuc, « La fonction de demande de monnaie pour la zone euro : un réexamen », mai 2006.
143. C. Jardet, "Term Structure Anomalies : Term Premium or Peso Problem?" May 2006.
144. S. Avouyi-Dovi, R. Kierzenkowski and C. Lubochinsky, "Are Business and Credit Cycles Converging or Diverging? A comparison of Poland, Hungary, the Czech Republic and the Euro Area", May 2006.
145. O. De Bandt, C. Bruneau and A. Flageollet, "Assessing Aggregate Comovements in France, Germany and Italy. Using a Non Stationary Factor Model of the Euro Area" June 2006.
146. M. Baghli, C. Cahn and J-P. Villetelle, "Estimating Potential Output with a Production Function for France, Germany and Italy", June 2006.
147. E. Fonteny, « La désaisonnalisation des séries d'agrégats monétaires et de crédit à la Banque de France : aspects théoriques et mise en œuvre », juin 2006.
148. J. Matheron and C. Poilly, "How Well Does a Small Structural Model with Sticky Prices and Wages Fit Postwar U.S. Data", July 2006.

149. E. Kharroubi, "Financial (Dis) Integration," July 2006.
150. J. Carrillo, P. Fève and J. Matheron, "Monetary Policy Inertia or Persistent Shocks?" July 2006.
151. C. Ewerhart, N. Cassola and N. Valla, "Declining Valuations and Equilibrium Bidding in Central Bank Refinancing Operations," August 2006.
152. D. Fougère, « Réformes structurelles sur le marché du travail : quels enseignements peut-on tirer des études existantes », août 2006.
153. D. Irac, "Revisiting the proximity-concentration trade-off: Distance and Horizontal Foreign Direct Investment in OECD Countries," August 2006.
154. D. Irac and C. Minoiu, "Risk insurance in a Transition Economy: Evidence from Rural Romania," August 2006.
155. H. Lustig and A. Verdelhan, "The Cross-Section of Foreign Currency Risk Premia and Consumption Growth Risk," August 2006.
156. R. Bourlès and G. Clette, "Trends in "structural" productivity levels in the major industrialized countries," September 2006.
157. J.-S. Mésonnier, "The Reliability of Macroeconomic Forecasts based on Real Interest Rate Gap Estimates in Real Time: an Assessment for the Euro Area," October 2006.
158. O. de Bandt, C. Bruneau and W. El Amri, "Convergence in Household Credit Demand across Euro Area Countries: Evidence from Panel Data," October 2006.
159. J. Idier, "Stock Exchanges Industry Consolidation and Shock Transmission," December 2006.
160. E. Gautier, "The Behaviour of Producer Prices: Some Evidence from the French PPI Micro Data," December 2006.
161. O. Loisel, "Bubble-free interest-rate rules," December 2006.
162. J. Boivin and M. P. Giannoni, "DSGE Models in a Data-Rich Environment," January 2007.
163. J. Coffinet, J. Matheron et C. Poilly, « Une évaluation structurelle du ratio de sacrifice dans la zone euro », janvier 2007.
164. P. Vermeulen, D. Dias, M. Dossche, E. Gautier, I. Hernando, R. Sabbatini and H. Stahl, "Price setting in the euro area: Some stylised facts from Individual Producer Price Data," February 2007.
165. C. Bordes, L. Clerc and V. Marimoutou, "Is there a structural break in equilibrium velocity in the euro area?" February 2007.
166. D. Fougère, « Les méthodes micro-économétriques d'évaluation », mars 2007.
167. C. Jardet and G. Le Fol, "Euro money market interest rates dynamics and volatility: How they respond to recent changes in the operational framework," May 2007.
168. L. Clerc, "Understanding asset prices: determinants and policy implications," May 2007.

169. F. Savignac, "The impact of financial constraints on innovation: What can be learned from a direct measure?," June 2007.
170. J. Idier, C. Jardet and A. de Loubens, "Determinants of long-term interest rates in the United States and the euro area: A multivariate approach," June 2007.
171. O. Darné et V. Brunhes-Lesage, « L'Indicateur Synthétique Mensuel d'Activité (ISMA) : une révision », Juillet 2007.
172. R. Kierzenkowski et V. Oung, « L'évolution des crédits à l'habitat en France : une grille d'analyse en termes de cycles », Juillet 2007.
173. O. de Bandt, A. Banerjee and T. Koźluk, "Measuring Long-Run Exchange Rate Pass-Through," July 2007.
174. J. Alho and V. Borge, "Global Ageing and Macroeconomic Consequences of Demographic Uncertainty in a Multi-regional Model," July 2007.
175. J.-S. Mésonnier and J.-P. Renne, "Does uncertainty make a time-varying natural rate of interest irrelevant for the conduct of monetary policy?," September 2007.
176. J. Idier and S. Nardelli, "Probability of informed trading: an empirical application to the euro overnight market rate," September 2007.
177. H. Partouche, "Time-Varying Coefficients in a GMM Framework: Estimation of a Forward Looking Taylor Rule for the Federal Reserve," September 2007.

Pour tous commentaires ou demandes sur les Notes d'Études et de Recherche, contacter la bibliothèque de la direction de la recherche à l'adresse suivante :

For any comment or enquiries on the Working Papers, contact the library of the Research Directorate at the following address :

BANQUE DE FRANCE
41- 1404 Labolog
75049 Paris Cedex 01
tél : 0033 (0)1 42 92 49 55 ou 62 65
fax :0033 (0)1 42 92 62 92
email : thierry.demoulin@banque-france.fr
jeannine.agoutin@banque-france.fr