



Central **B**anks **I**nternal **M**anagement in times of **C**OVID 19-Survey Results

L'INSTITUT BANCAIRE ET FINANCIER INTERNATIONAL

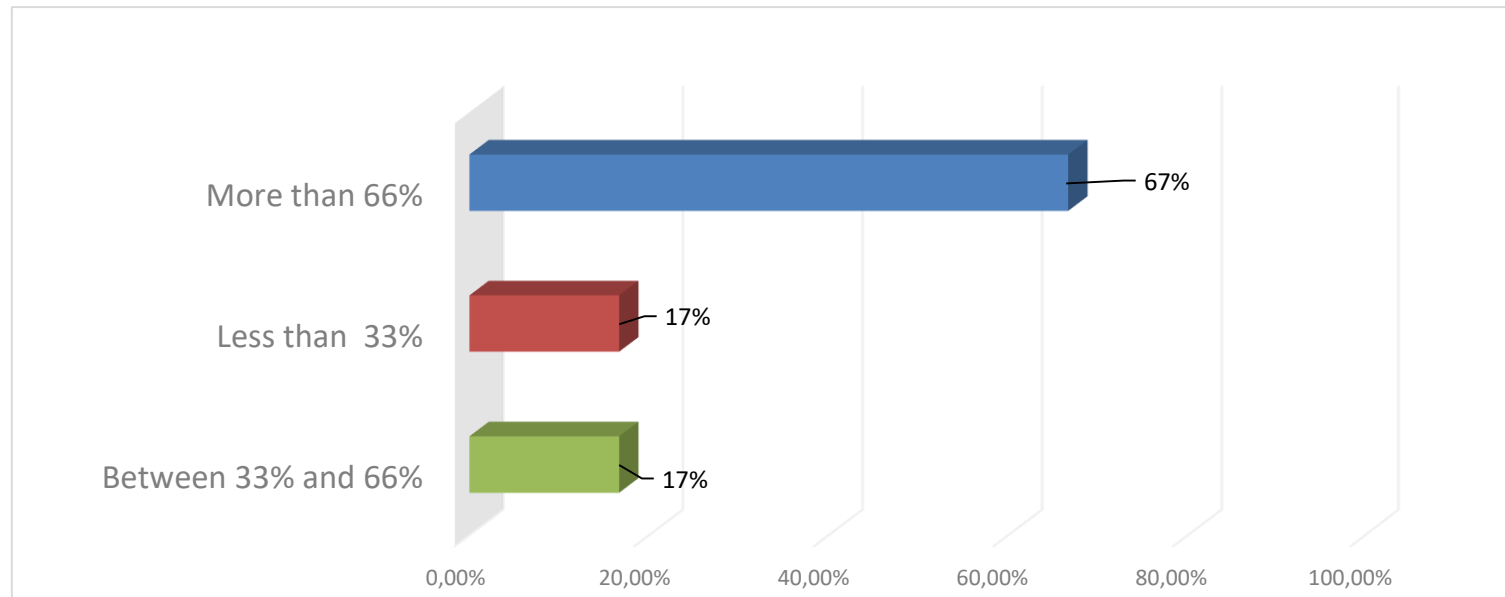


J.-L. Quémard
Head of the International Banking
and Finance Institute
Paris, 30 April 2020

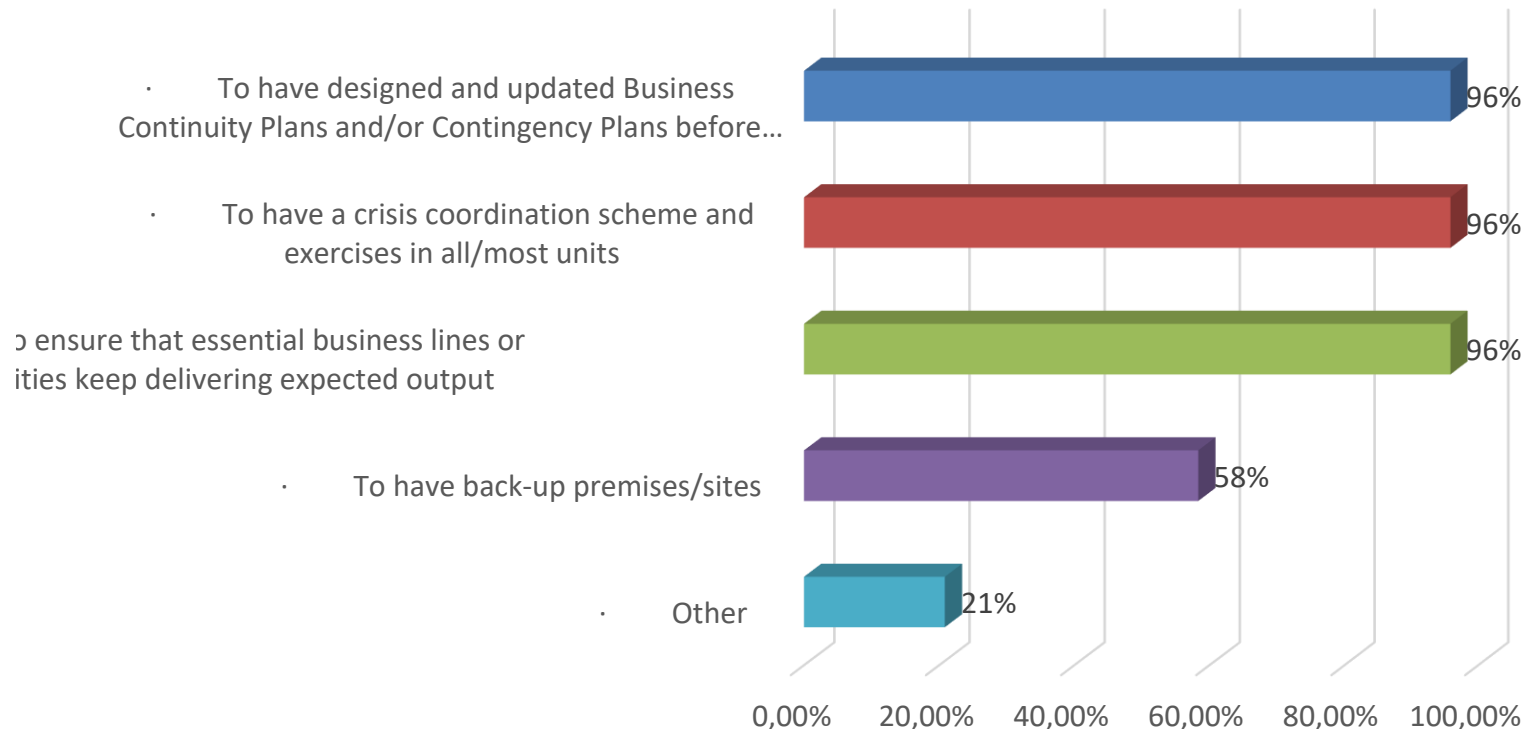
COVID 19 : A HUGE IMPACT ON THE WORKING ORGANIZATIONS

**SURVEY / SNAPSHOT : 24 RESPONDENTS / INSTITUTIONS
FROM AFRICA, LATIN AMERICA, ASIA AND EUROPE**

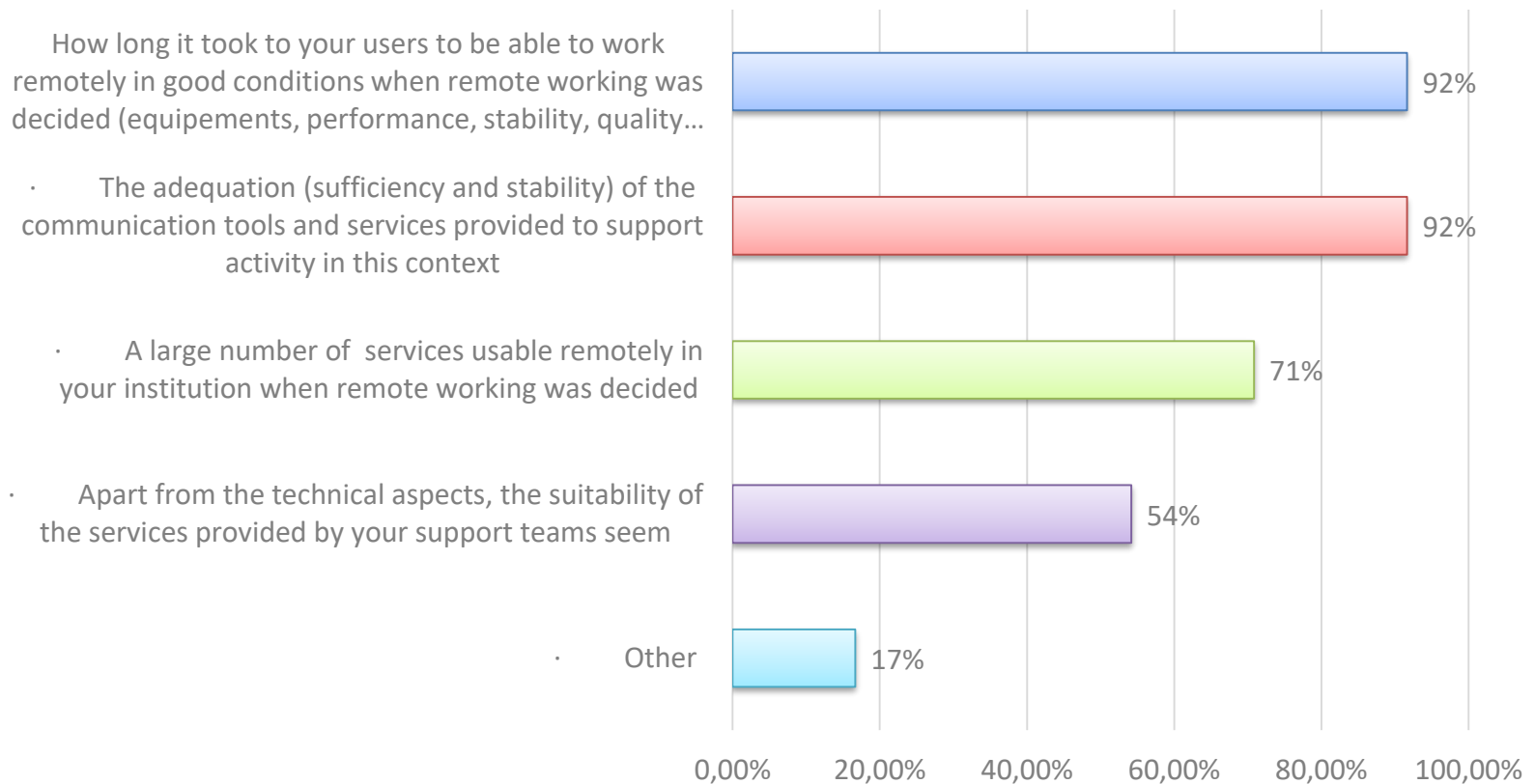
WHICH PROPORTION OF YOUR STAFF HAS BEEN WORKING FROM HOME DURING THE COVID19 CRISIS ?



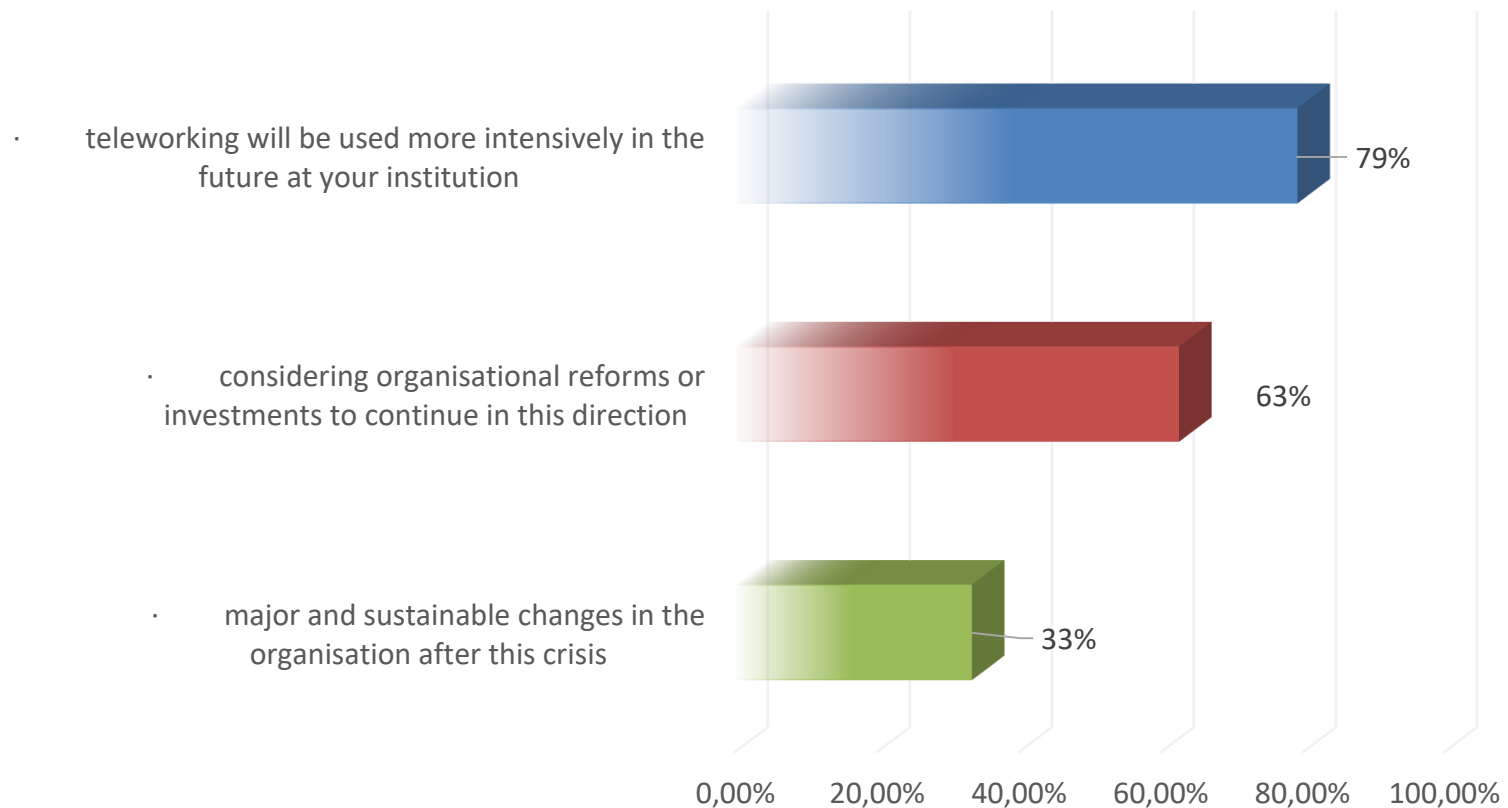
WHAT ARE THE KEY ELEMENTS TO ENSURE BUSINESS CONTINUITY TO COPE WITH THE COVID 19 CRISIS ?



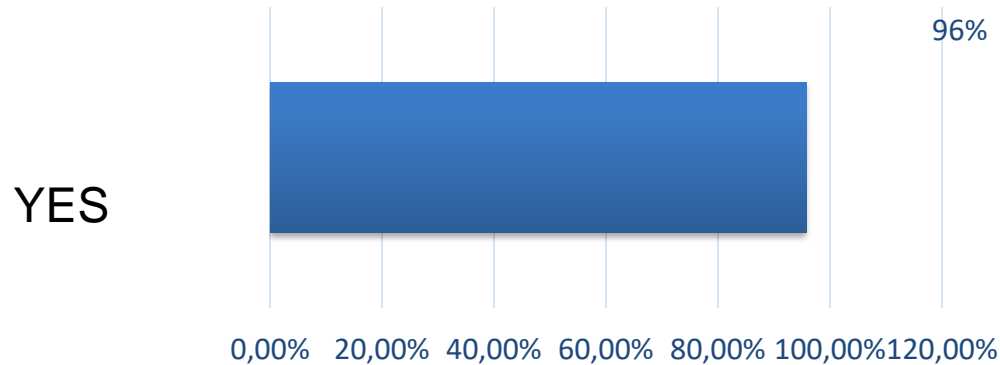
WHAT ARE IT CHALLENGES TO COPE WITH THE COVID 19 CRISIS ?



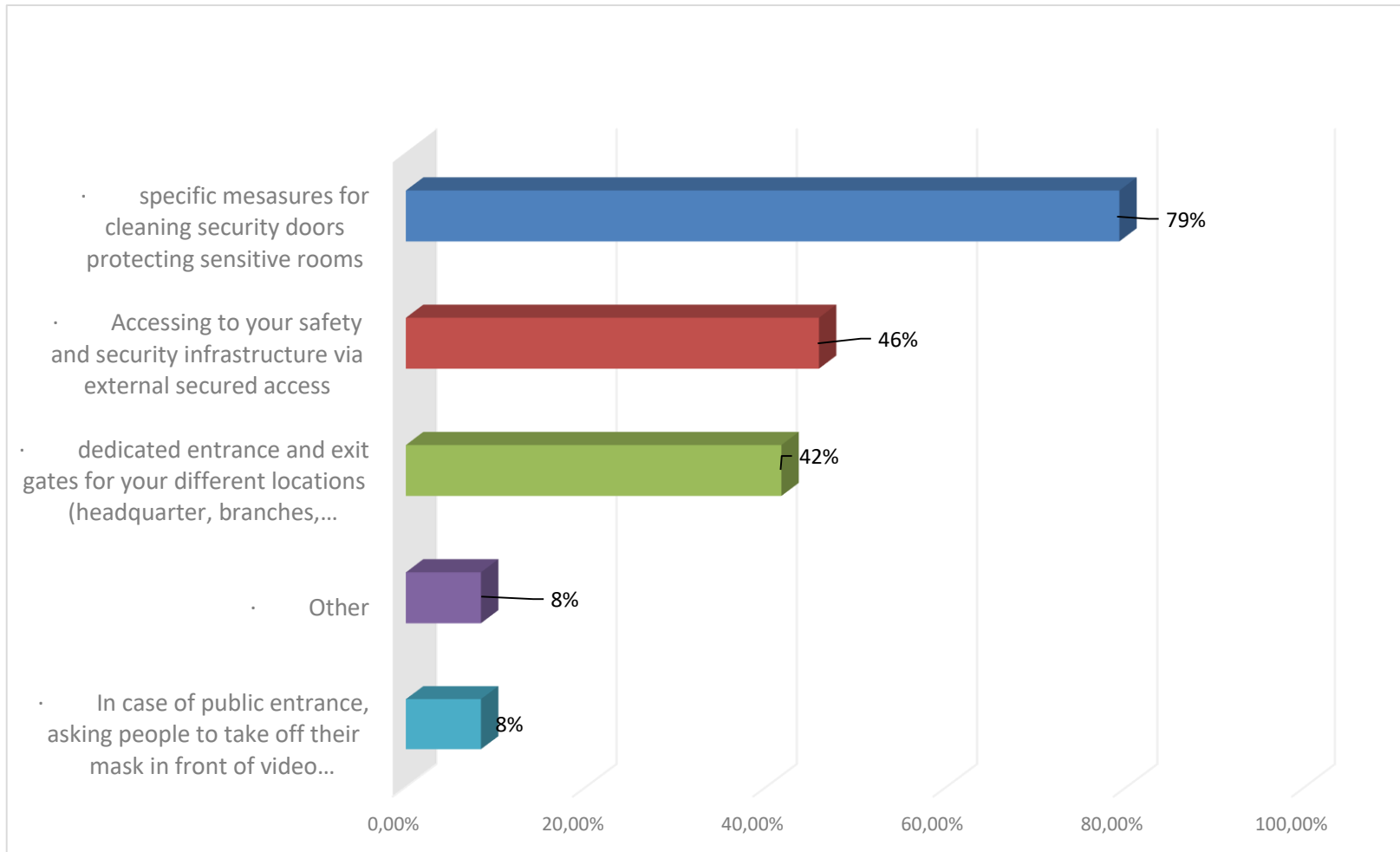
WHAT COULD BE THE POST-COVID 19 CRISIS IT CHALLENGES ?



IN TIMES OF COVID 19 ARE SECURITY AND SAFETY IMPORTANT CHALLENGES TO CONSIDER AND TO ADAPT ?

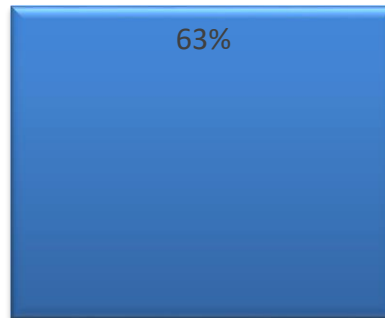


WHAT MEASURES DO YOU ENVISAGE OR HAVE YOU IMPLEMENTED?

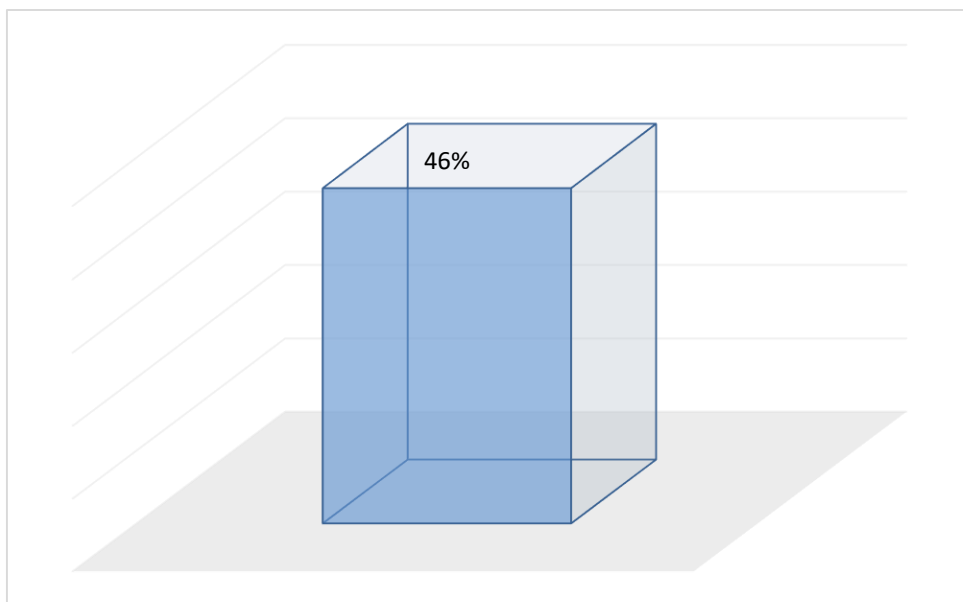


HR CHALLENGES : COULD RECRUITMENT PROCESSES KEEP ON DURING THE CONTAINMENT PERIOD ?

NO

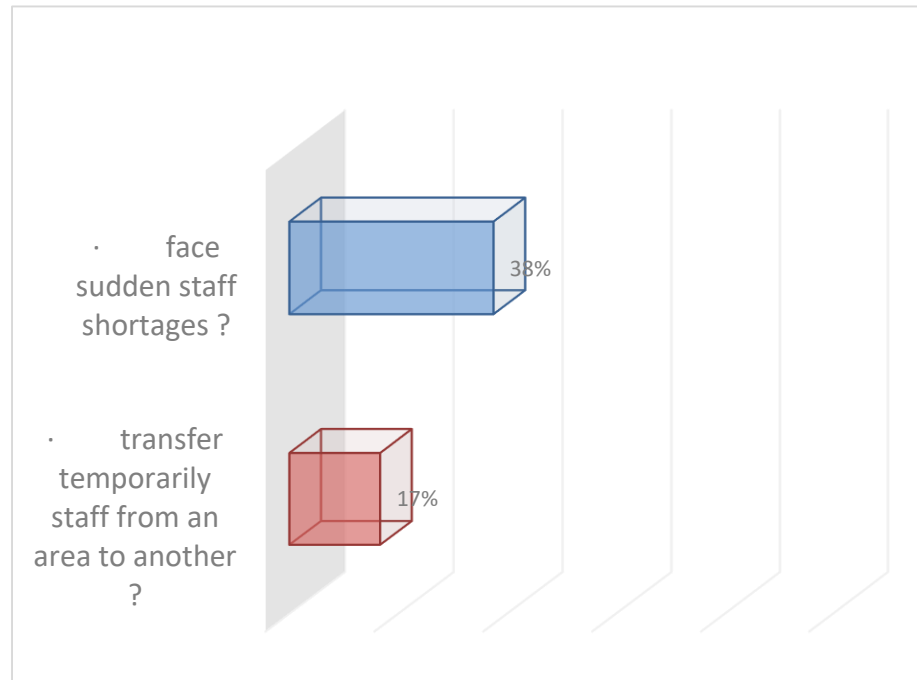


HR CHALLENGES : HAVE YOU PROVIDED ON-LINE TRAINING ACTIONS ?



YES

HR CHALLENGES : DID YOU

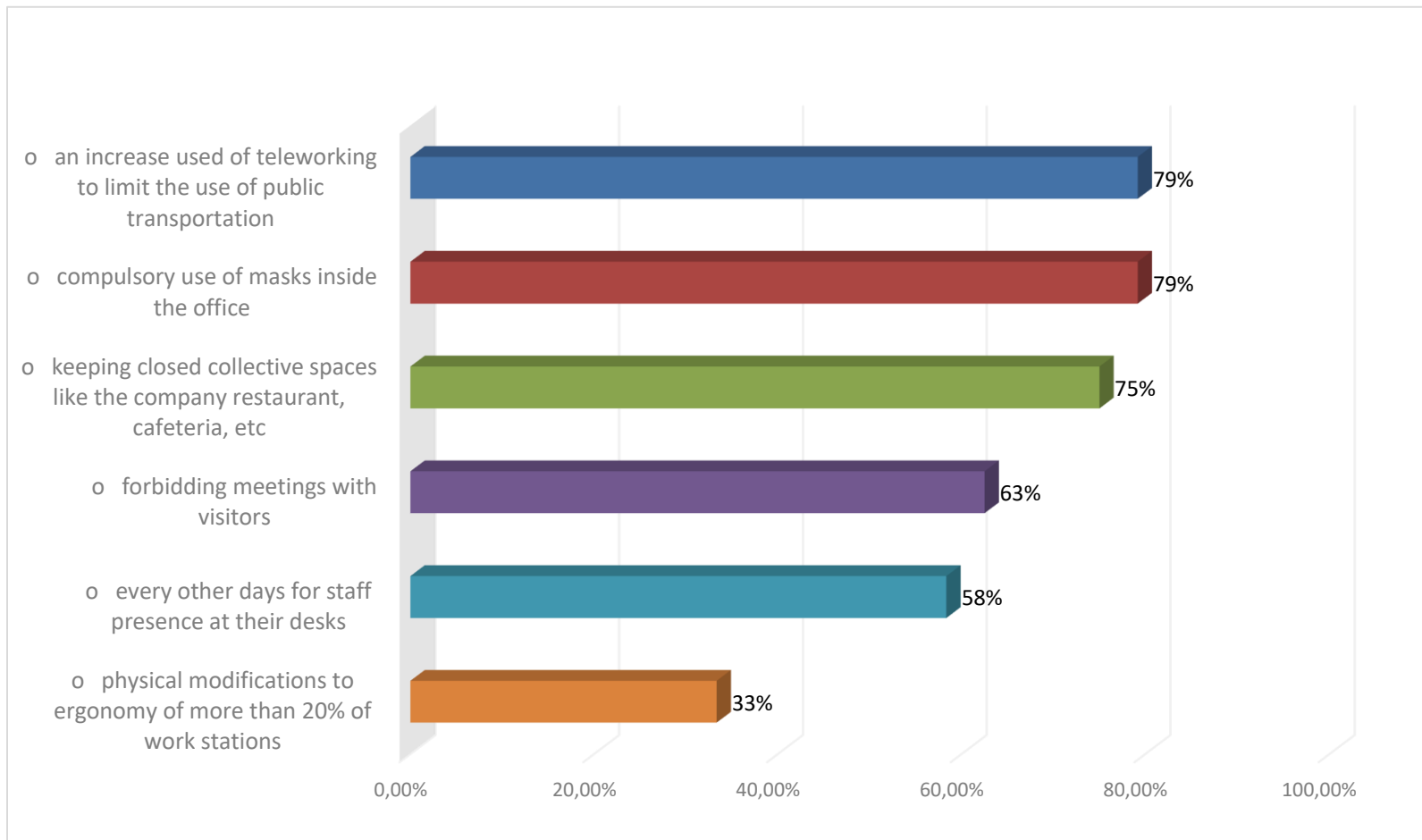


END OF LOCK DOWN CHALLENGE : SOCIAL DISTANCING

DO YOU THINK THAT AT THE TIME STAFF GO BACK TO THEIR DESK, SPECIFIC MEASURES SUCH AS “SOCIAL DISTANCING” MEASURES ARE NECESSARY ?

YES : 75%

WHAT MEASURES FOR SOCIAL DISTANCING AFTER THE CRISIS?



In comments : taking temperature at the entrance of premises

DATA AND STATISTICS CONTAINED IN THIS DOCUMENT ARE CALCULATED FROM PARTICIPANTS' RESPONSES TO A QUESTIONNAIRE CIRCULATED PRIOR TO THE WEBINAR. NO ATTEMPT HAS BEEN MADE TO VERIFY ACCURACY.

DEFINITIONS AND METHODOLOGIES DIFFER ACROSS JURISDICTIONS. THESE COULD EXPLAIN SOME RESULTS.

THE VIEWS EXPRESSED ARE THOSE OF THE AUTHOR.